

Type 3253-1 and Type 3253-7 Pneumatic Control Valves

SAMSON



Mounting and Operating Instructions

EB 8055 EN

Edition August 2016

CE

Definition of signal words



DANGER!

Hazardous situations which, if not avoided, will result in death or serious injury



WARNING!

Hazardous situations which, if not avoided, could result in death or serious injury



NOTICE

Property damage message or malfunction



Note:

Additional information



Tip:

Recommended action

1	General safety instructions	4
2	Design and principle of operation	6
3	Assembling valve and actuator	8
3.1	Assembly and adjustment	8
3.2	Option of preloading springs for "actuator stem extends"	9
3.3	Different rated travels of valve and actuator	9
4	Installation	12
4.1	Mounting position	12
4.2	Arrangement of the valve	12
4.3	Signal pressure line	14
4.4	Strainer and bypass	14
4.5	Test connection	14
5	Operation	14
6	Maintenance	14
6.1	Replacing parts in standard valves	16
6.1.1	Packing	16
6.1.2	Seats and/or plugs	17
6.2	Replacing parts in valves with bellows seal	18
6.2.1	Packing	18
6.2.2	Metal bellows	18
6.3	Replacing parts in valves with insulating section	18
7	Description of nameplates	20
8	Technical data	21
9	Customer inquiries	21

1 General safety instructions



- The control valve must be mounted, started up, or serviced by fully trained and qualified personnel only; the accepted industry codes and practices are to be observed. Make sure employees or third persons are not exposed to any danger.
All safety instructions and warnings given in these mounting and operating instructions, particularly those concerning installation, start-up and maintenance, must be strictly observed.
- The control valves comply with the requirements of the European Pressure Equipment Directive 2014/68/EU. Valves with a CE marking have a declaration of conformity, which includes information about the applied conformity assessment procedure. The declaration of conformity can be viewed and downloaded at ► <http://www.samson.de>.
- To ensure appropriate use, only use the valve in applications where the operating pressure and temperatures do not exceed the specifications used for sizing the valve at the ordering stage. The manufacturer does not assume any responsibility for damage caused by external forces or any other external factors.
Any hazards that could be caused in the valve by the process medium, the operating pressure, the signal pressure or by moving parts are to be prevented by taking appropriate precautions.
- Proper shipping and storage are assumed.

WARNING!

- For installation and maintenance, make sure the relevant section of the pipeline is depressurized and, depending on the process medium, drained as well. Depending on the field of application, allow the valve to cool down or heat up to reach ambient temperature before starting any work on it.
- When working on the valve, make sure that the pneumatic air supply as well as the control signal are disconnected to prevent any hazards caused by moving parts.
- Be particularly careful if the actuator springs are preloaded. Such actuators are labeled correspondingly and can also be identified by three long bolts protruding from the bottom of the actuator. Before starting any work on the valve, relieve the compression from the preloaded springs.

**Note:**

Non-electric control valve versions whose bodies are not lined with an **insulating material coating** do not have their own potential ignition source according to the risk assessment stipulated in EN 13463-1: 2001, section 5.2, even in the rare incident of an operating fault. Therefore, such valve versions do **not** fall within the scope of Directive 2014/34/EU.

2 Design and principle of operation

The Type 3253-1 and Type 3253-7 Pneumatic Control Valves consist of the Type 3253 Three-way Valve and either a Type 3271 or Type 3277 Pneumatic Actuator.

Depending on the plug arrangement, the three-way valve can be used either as a mixing or diverting valve.

In mixing valves, the process media to be mixed enter at valve ports **A** and **B**. The combined flow exits the valve at port **AB**.

In diverting valves, in contrast, the process medium enters at the valve port **AB** and the partial flows exit at ports **A** and **B**.

The flow rate from ports **A** or **B** to **AB** and vice versa depends on the cross-sectional area of flow between the seats and plugs.

The plugs (3.1, 3.2) are moved by changing the control signal acting on the diaphragm of the actuator (8).

The plug stem (6) and the plugs are connected to the actuator stem (8.1) via the stem connector (7) and sealed at the packing (4) by either spring-loaded PTFE V-ring pack-

ings or by adjustable high-temperature packings.

Fail-safe position

Depending on how the compression springs (8.3) are arranged in the actuator, the valve has two different fail-safe positions:

Actuator stem extends:

When the signal pressure is reduced or the power supply fails, the compression springs force the actuator stem to move downward, closing port **B** in the mixing valve or port **A** in the diverting valve.

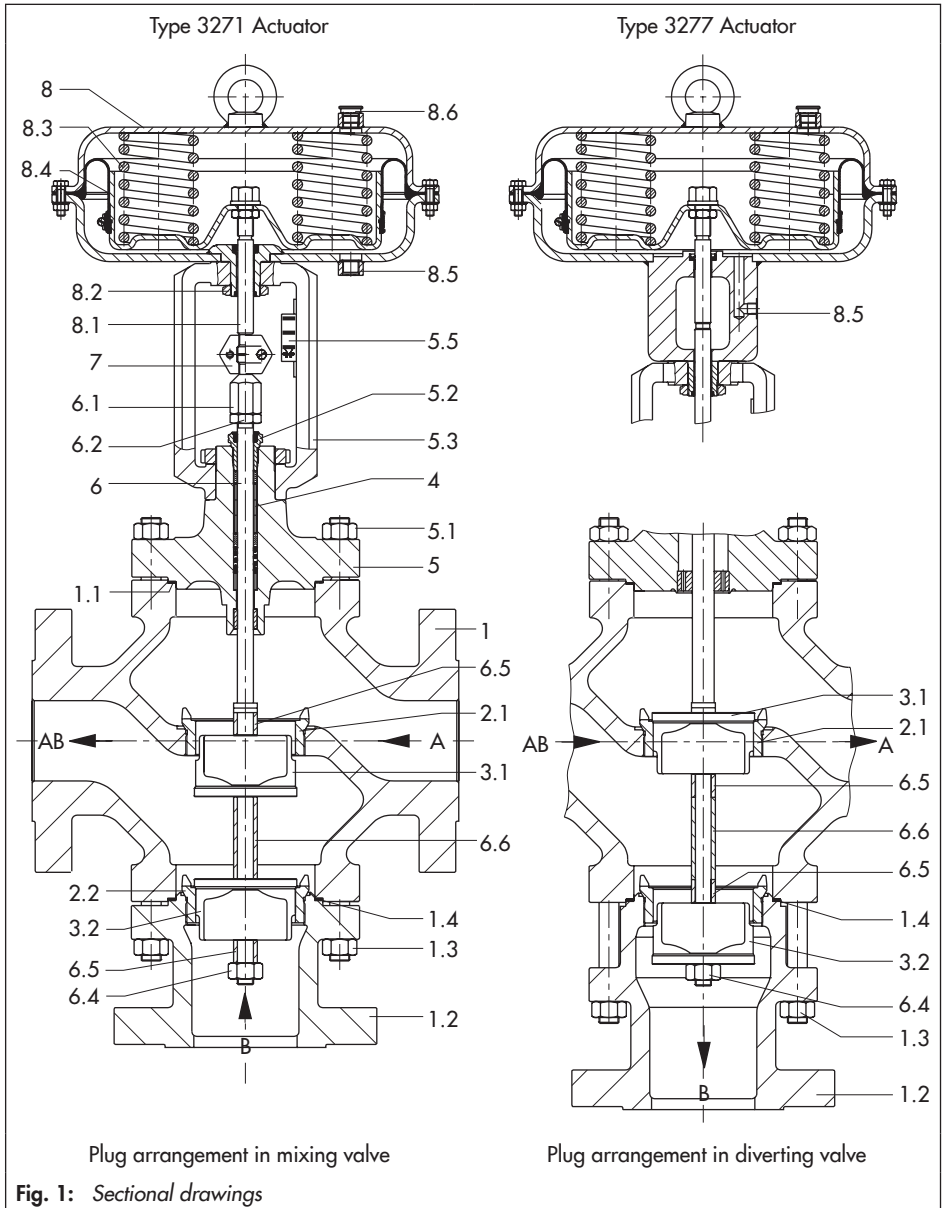
The valve ports **B** or **A** are opened against the force of the compression springs when the signal pressure increases.

Actuator stem retracts:

When the signal pressure is reduced or the power supply fails, the compression springs force the actuator stem to move upward, opening port **B** in the mixing valve or port **A** in the diverting valve.

The valve ports **B** or **A** are closed against the force of the compression springs when the signal pressure increases.

1	Valve body	5	Valve bonnet	6.6	Long sleeve
1.1	Gasket	5.1	Nuts	7	Stem connector
1.2	Seat body	5.2	Threaded bushing	8	Actuator
1.3	Body nuts	5.3	Yoke	8.1	Actuator stem
1.4	Gasket	5.5	Travel indicator	8.2	Ring nut
2.1	Upper seat	6	Plug stem	8.3	Springs
2.2	Lower seat	6.1	Stem connector nut	8.4	Diaphragm
3.1	Upper plug	6.2	Lock nut	8.5	Signal pressure connection
3.2	Lower plug	6.4	Nut	8.6	Vent plug
4	Packing	6.5	Short sleeve		



3 Assembling valve and actuator

The basic pneumatic actuator can be replaced by a pneumatic actuator with additional handwheel or by an electric actuator.

The standard pneumatic actuator can be replaced by a smaller or larger actuator for all nominal valve sizes.

If the travel range of the actuator is larger than the travel of the valve, the springs in the actuator are preloaded by the manufacturer so that the travel ranges match.

Each valve is supplied with the parts required for its standard actuator. If you intend to use a different actuator, order the required mounting parts together with the actuator.

The required parts and their order numbers can be found in the overview 1600-0501 to 0550, which is available on request. In this case, the original parts are exchanged for the additionally delivered parts.

3.1 Assembly and adjustment

Proceed as follows if the valve and actuator have not been assembled by the manufacturer or if the actuator is to be replaced by an actuator of another type or size:

1. Loosen the lock nut (6.2) and stem connector nut (6.1) on the valve.
Firmly press the plug and plug stem into the seat ring and screw the lock nut and stem connector nut downward.
2. Remove the stem connector clamps (7) and the ring nut (8.2) from the actuator. Slide the ring nut over the valve's plug stem.
3. Place the actuator onto the yoke (5.3) and secure it with the ring nut (8.2).
4. Read the bench range (or bench range with preloaded springs) and the actuator's fail-safe action from the actuator's nameplate (e.g. 0.2 to 1 bar and "actuator stem extends").
The lower value (0.2 bar) corresponds to the lower bench range value to be adjusted, whereas the upper value (1 bar) corresponds to the upper bench range value. The fail-safe action "Actuator stem extends" (FA) or "Actuator stem retracts" (FE) is marked by FA or FE on the Type 3271 Actuator, and by a symbol on the nameplate of the Type 3277 Actuator.
5. For actuators with "**actuator stem extends**" fail-safe action, apply a signal pressure that corresponds to the lower bench range value (e.g. 0.2 bar) to the

connection on the bottom diaphragm chamber.

For actuators with "**actuator stem retracts**" fail-safe action, apply a signal pressure that corresponds to the upper bench range value (e.g. 1 bar) to the connection on the top diaphragm chamber.

6. Screw on the stem connector nut (6.1) by hand until it touches the actuator stem (8.1); then turn it a further $\frac{1}{4}$ turn and secure this position with the lock nut (6.2).
7. Position the stem connector clamps (7) and screw them tight.
Align the travel indicator scale (5.5) with the tip of the stem connector clamp.



Note on removing an actuator:

When removing an actuator from a valve, especially an actuator with preloaded springs, apply a signal pressure that is slightly higher than the lower bench range value (see actuator nameplate) to the signal pressure connection so that the ring nut (8.2) can be unscrewed.

3.2 Option of preloading springs for "actuator stem extends"

To achieve a greater positioning force, the springs of these actuators can be preloaded by up to 25 % of their travel or their bench range.

When a preload of, e.g. 0.1 bar, is desired for a bench range of 0.2 to 1 bar, the lower bench range value is shifted by 0.1 bar to 0.3 bar (0.1 bar correspond to a preload of 12.5 %).

When adjusting the valve, set the lower bench range value to 0.3 bar.

Write the new bench range with preloaded springs of 0.3 to 1.1 bar on the nameplate.

3.3 Different rated travels of valve and actuator

Valve with actuator with "stem extends" fail-safe action



NOTICE

Always use actuators with preloaded springs when the valve's rated travel is smaller than the rated travel of the actuator.

Example:

DN 100 valve with 30 mm rated travel and 1400 cm² actuator with 60 mm rated travel, bench range 0.4 to 2 bar.

1. Set the signal pressure required for preloading from 1.2 bar (1.2 to 2 bar), which corresponds to half the actuator's travel (30 mm), to 1.6 bar.
2. Screw on the stem connector nut (6.1) until it touches the actuator stem.
3. Secure this position with the lock nut and mount the stem connector as described in section 3.1.

4. Write the bench range of 1.6 to 2.4 bar valid for the assembled control valve on the actuator's nameplate.

Valve with actuator with "stem retracts" fail-safe action

The springs of actuators with "Actuator stem retracts" cannot be preloaded.

When a valve is combined with an oversized actuator (rated actuator travel larger than rated valve travel), only the first half of the actuator's bench range can be used.

Example:

DN 100 valve with 30 mm rated travel and 1400 cm² actuator with 60 mm rated travel, bench range 0.2 to 1 bar:

At half the valve travel, the usable bench range is between 0.2 and 0.6 bar.



Note:

Actuators that have already been preloaded by the manufacturer without mounting the valve are labeled correspondingly. Additionally, they can be identified by three longer bolts with nuts protruding from the bottom diaphragm case.

4 Installation

4.1 Mounting position

The valve can be mounted in any desired position. However, we recommend installing valves in sizes DN 100 and larger in the upright position with the actuator on top. Otherwise, it will be difficult to perform maintenance routines on the valve. For valves fitted with an insulating section or bellows seal and for actuators weighing more than 50 kg, the actuator needs to be supported or suspended.

! NOTICE

Install the valve free of stress.

Pipeline routing

To ensure that the control valve functions properly, the pipeline must be straight and without any manifolds or disturbances for a distance of at least 6 times the valve size (DN) upstream and downstream of the valve. Contact SAMSON if this distance cannot be observed.

Flush the pipeline thoroughly before installing the valve.



Note:

Only insulate control valves with insulating section or bellows seal up to the bonnet flange of the valve body for medium temperatures below 0 °C and above 220 °C.

*Do not insulate valves mounted to comply with **NACE MR0175** requirements.*

4.2 Arrangement of the valve

Install the valve as shown in Fig. 2 depending on whether it is to be used for mixing or diverting service.

The installation examples apply to standard operation with fail-safe action "Actuator stem extends" for heating applications and "Actuator stem retracts" for cooling applications.

Fail-safe action: the valve shuts off the flow of the heating or cooling medium.

The plug arrangement (i.e. either mixing or diverting valve) is indicated on a label attached to the valve body.

In DN 15 to 25, the plug arrangement is the same for mixing and diverting valves.

Mixing service

Temperature control $Q = \text{constant}$

Fail-safe action: FA = "Actuator stem extends", FE = "Actuator stem retracts"

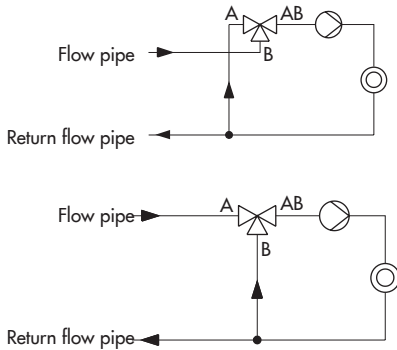
In heating applications with FA, the heating medium (flow) is shut off in the fail-safe position, in cooling applications with FE, cooling is maintained in the fail-safe position.

Diverting service

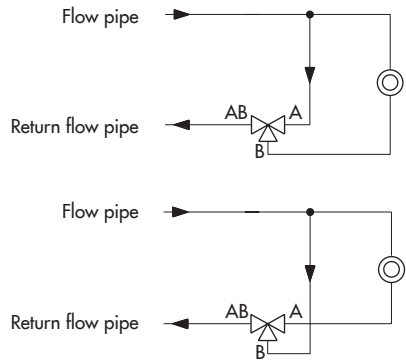
Flow control $Q = 0 \text{ to } 100 \%$

Heating with mixing valve (FA) or cooling with mixing valve (FE)

Installation in flow pipe

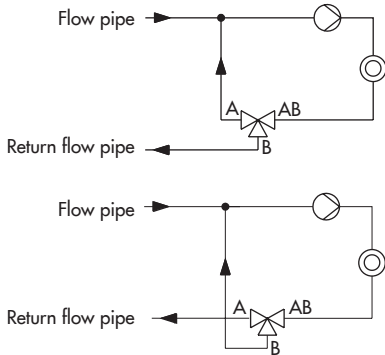


Installation in return flow pipe



Heating with diverting valve (FA) or cooling with diverting valve (FE)

Installation in return flow pipe



Installation in flow pipe

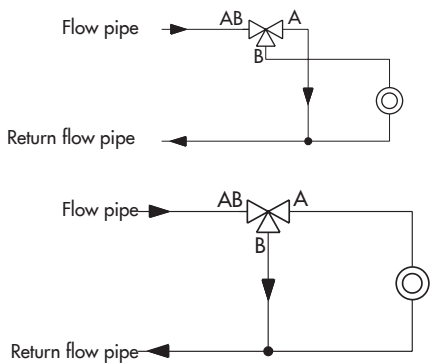


Fig. 2: Typical installations

4.3 Signal pressure line

Connect the signal pressure line for valves with "Actuator stem extends" actuator to the connection on the bottom diaphragm case, and for valves with "Actuator stem retracts" actuator to the connection on the top diaphragm case.

In the Type 3277 Actuator, the lower signal pressure connection is located at the side of the yoke under the bottom diaphragm case.

4.4 Strainer and bypass

We recommend to install a strainer upstream of the valve, and upstream of both inlet ports in mixing valves.

We recommend installing a shut-off valve both upstream of the strainer and downstream of the valve to ensure that the plant does not need to be shut down for maintenance. In addition, install a bypass line.

4.5 Test connection

Versions with bellows seal (Fig. 4) are fitted with a test connection (11.1) at the top flange to monitor the tightness of the bellows.

Particularly for liquids and vapors, we recommend installing a suitable leakage indicator, such as a contact pressure gauge, an outlet to an open vessel or an inspection glass.

5 Operation

(e.g. reversing the direction of action etc.)

Refer to the mounting and operating instructions of the pneumatic actuators: ► EB 8310 for Type 3271 and ► EB 8311 for Type 3277.



Note on special SAMSON tools:

Suitable seat wrenches and special tools as well as the associated tightening torques are listed in EB 029 (previously WA 029).

The document is available at

► http://www.samson.de/pdf_en/e00290en.pdf.

6 Maintenance

The control valve is subject to normal wear, especially at the seat, plug, and packing. Depending on the operating conditions, check the valve at regular intervals to prevent possible failure before it can occur.

External leakage can indicate that the packing is defective.

If the valve does not close tightly, tight shut-off may be impaired by dirt stuck between the seat and plug or by damaged facings.

We recommend removing the parts, cleaning them, and, if necessary, replacing them with new ones.

**WARNING!****Working on the control valve:**

Before performing any work on the control valve, make sure the relevant plant section has been depressurized and, depending on the process medium, drained as well.

When used at high temperatures, allow the plant section to cool down to ambient temperature.

Valves are not free of cavities. As a result, residual process medium might still be contained in the valve. This applies to valve versions with bellows seal or insulating section in particular.

We recommend removing the valve from the pipeline.

Working on the valve body:

Before starting any work on the valve body, disconnect the signal pressure and remove the signal pressure line as well as the actuator.

**Note:**

Contact your nearest SAMSON subsidiary or the SAMSON After-sales Service department for information on suitable lubricants.

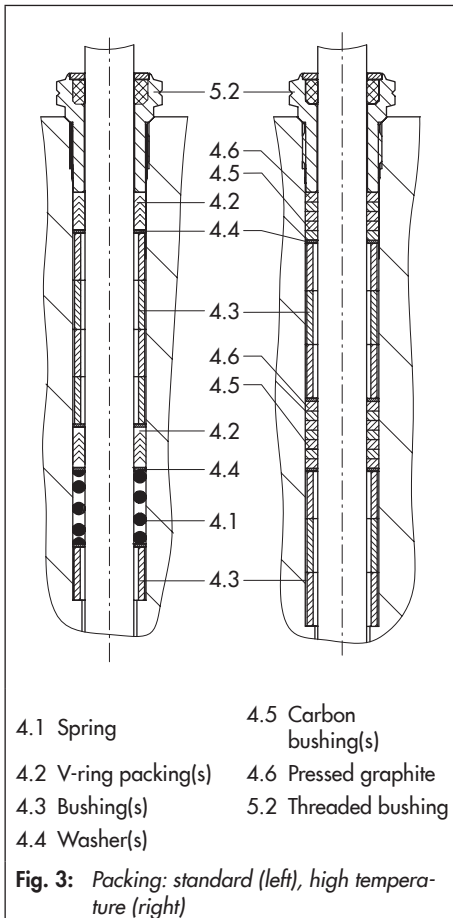
Removing the actuator from the valve:

1. Unscrew the ring nut (8.2) and remove the stem connector (7).
For fail-close actuators and particularly for actuators with preloaded springs, apply a signal pressure that is higher than the lower bench range value (see nameplate) to the actuator so that the ring nut can be unscrewed.
Disconnect the signal pressure again.
2. Remove the actuator from the valve yoke.

6.1 Replacing parts in standard valves

6.1.1 Packing

If the packing leaks, replace the packing (4.2) and the sealing parts (4.5 and 4.6).



- Unscrew the lock nut (6.2) and stem connector nut (6.1) from the plug stem. Unscrew the threaded nut (5.2) of the packing.
- Remove the nuts (5.1) and carefully lift off the valve bonnet (5) over the plug stem (6).
- Pull the entire packing out of the packing chamber using a suitable tool and replace damaged parts. Clean the packing chamber thoroughly.
- Apply a suitable lubricant to all parts as well as the plug stem (6). Do not use lubricant on graphite packings.
- Insert a new gasket (1.1) into the valve body.
- Carefully slide the valve bonnet over the plug stem onto the valve body and secure it with nuts (5.1).
- Carefully slide the packing parts over the plug stem into the packing chamber. Keep them in the right order. The number of spacer bushings (4.3) may vary depending on the nominal valve size. Screw in the threaded bushing (5.2) and tighten it. For high-temperature packings, only tighten the threaded bushing slightly; in case of leakage, also retighten it only slightly.
- Loosely screw the lock nut (6.2) and stem connector nut (6.1) onto the plug stem.
- Mount the actuator as described in section 3.1 and adjust the upper and lower bench range values.

6.1.2 Seats and/or plugs

Mixing and diverting valves differ in the arrangement of their plugs and sleeves.

Valves in sizes DN 15 to 25 have a one-piece double plug, therefore the plug arrangement is the same for mixing and diverting service; no sleeves are needed.

When replacing the seat or plug, we also recommend replacing the packing parts (4.2 or 4.5 and 4.6).

1. Unscrew the nut (6.4) at the end of the plug stem while holding the stem connector nut (6.1) in place.
2. In the **mixing valve**, remove the sleeve (6.5); in the **diverting valve**, remove the plug (3.2) and sleeves (6.5 and 6.6).
3. Unscrew the nuts (1.3) and separate the seat body (1.2) from the valve body.
4. In the mixing valve, pull the plug (3.2), sleeve (6.6), plug (3.1) and sleeve (6.5) off the plug stem (6).
5. Unscrew the nuts (5.1) and lift off the valve bonnet (5) with the yoke and plug stem. In the diverting valve, also remove the upper plug (3.1).
6. Unscrew the lock nut (6.2) and stem connector nut (6.1) as well as the threaded bushing (5.2). Pull the plug stem out of the valve bonnet (5).
7. Replace the plug (3.1 and 3.2).
8. Unscrew the seats (2.1 and 2.2) with a suitable wrench (refer to EB 029).
9. Apply a suitable lubricant to the thread and the sealing cone of the new seats (it

may be possible to use the old seats again after they have been thoroughly cleaned or remachined). Screw in the seat. Refer to EB 029 for the tightening torques for the seats.

Reassembly:

1. Check the packing parts in the bonnet, or even better, replace the packing as described in section 6.1.1.
2. Apply a suitable lubricant to the plug stem (6). Do not use lubricant on graphite packings.
3. Push the plug stem into the valve bonnet. Slide in the stem carefully if the packing has not been replaced. The thread could damage the packing rings. When using new packings, carefully slide the packing parts over the plug stem into the packing chamber.
4. Screw in the threaded bushing (5.2) and tighten it.
For high-temperature packings, only tighten the threaded bushing slightly; in case of leakage, also retighten it only slightly.
Insert a new gasket (1.1) into the valve body.
5. In the diverting valve, slide the upper plug (3.1) into the seat (2.1) first.
6. Place the valve bonnet with the plug stem onto the valve body. Screw on the nuts (5.1) and tighten them.

Mixing valve:

7. Slide the sleeve (6.5), upper plug (3.1), sleeve (6.6), lower plug (3.2) and the

sleeve (6.5) onto the plug stem in this order from below and screw on the nut (6.4) by hand.

8. Insert a new gasket (1.4) into the valve body.

Carefully slide the seat body (1.2) over the lower plug (3.2) and firmly tighten it to the valve body using the nuts (1.3).

Diverting valve:

8. Insert a new gasket (1.4) and firmly tighten the seat body (1.2) to the valve body using the nuts (1.3).
9. Slide the sleeves (6.6, 2x 6.5) and the lower plug (3.2) onto the plug stem in this order from below and screw on the nut (6.4) by hand.
10. Screw the lock nut (6.2) and stem connector nut (6.1) onto the plug stem and counter them against each other.
9. Firmly tighten the nut (6.4) while holding the stem connector nut (6.1) in place. Unscrew the stem connector and lock nuts again.
10. Mount the actuator as described in section 3.1 and adjust the upper and lower bench range values.

6.2 Replacing parts in valves with bellows seal

6.2.1 Packing

Replace the packing as described for the standard version in section 6.1.1, however, remove the nuts (11.2) and separate the bonnet (11) from the intermediate piece (9). Replace the gasket (9.1). Do not separate the bonnet from the intermediate piece unless to replace the packings.

6.2.2 Metal bellows

The metal bellows (10) can only be replaced as a unit together with the plug stem. Proceed as described in section 6.1.2 (Fig. 4).

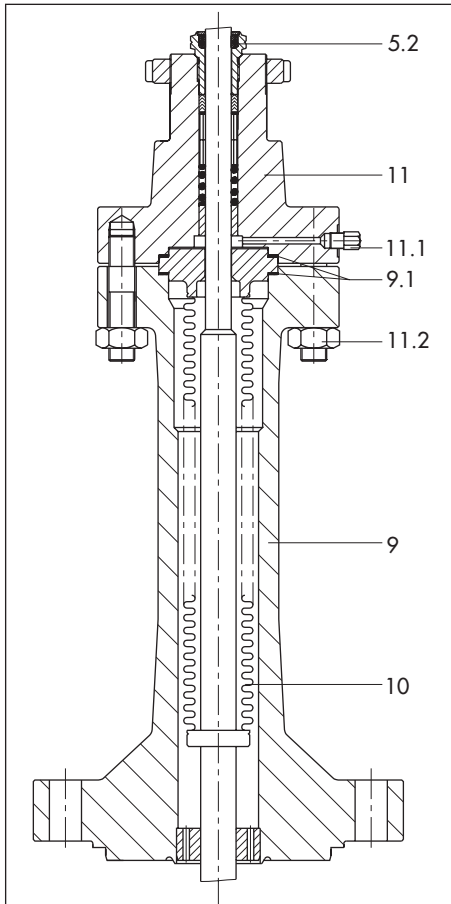
**NOTICE**

Do not transmit any torque to the metal bellows during assembly or disassembly of the bellows seal.

6.3 Replacing parts in valves with insulating section

Replace the packing as described for the standard version in section 6.1.1.

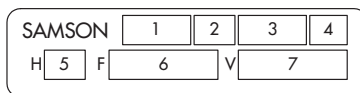
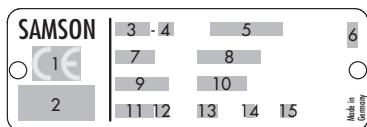
Replace the seat and plug as described for the standard version in section 6.1.2.



- 5.2 Threaded bushing 11 Bonnet
 9 Intermediate piece 11.1 Test connection
 9.1 Gasket 11.2 Nut
 10 Metal bellows

Fig. 4: Bellows version, DN 50 to 150

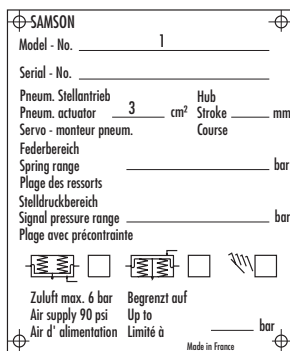
7 Description of nameplates



- 1 CE marking or "Art. 4, Abs. 3", where applicable
- 2 ID of the notified body, fluid group and category, where applicable
- 3 Type designation
- 4 Device modification index
- 5 Material
- 6 Year of manufacture
- 7 Valve size: DIN: DN, ANSI: Size
- 8 Perm. operating gauge pressure at room temperature, DIN: PN, ANSI: CL
- 9 Order no. with modification index
- 10 Order pos.
- 11 Flow coefficient:
DIN: K_{vs} , ANSI: C_v
- 12 Characteristic:
% equal percentage, **Lin** linear,
DIN: **A/Z**, ANSI: **O/C** for quick opening
- 13 Seal:
ME metal, **ST** Stellite® faced, **Ni** nickel plated,
PT soft PTFE seal,
PK soft PEEK seal
- 14 Version: **M** mixing valve, **V** diverting valve
- 15 Flow divider I or III

- 1 Type designation
- 2 Modification index
- 3 Actuator area
- 4 Fail-safe action:
Actuator stem extends (**FA**)
Actuator stem retracts (**FE**)
- 5 Actuator travel
- 6 Bench range
- 7 Bench range with preloaded springs

Type 3271



Type 3277

Fig. 5: Nameplates: valve (left) and actuator (right)

8 Technical data

The Type 3253 Valve bears both the CE and EAC marks of conformity.



The technical data as well as the dimensions and weights for the DIN and ANSI versions of the Type 3253 Valve are listed in the corresponding Data Sheets ► T 8055 and ► T 8056.

9 Customer inquiries

Please submit the following details:

- Order number
- Type, model number, nominal size, and valve version
- Pressure and temperature of the process medium
Flow rate in m³/h
- Bench range (e.g. 0.2 to 1 bar) of the mounted actuator
- Is a strainer installed?
- Installation drawing



SAMSON AG · MESS- UND REGELTECHNIK
Weismüllerstraße 3 · 60314 Frankfurt am Main, Germany
Phone: +49 69 4009-0 · Fax: +49 69 4009-1507
samson@samson.de · www.samson.de

EB 8055 EN

2016-10-14 · English