

Type 3374 Electric Actuator with digital positioner Setting using TROVIS-VIEW software

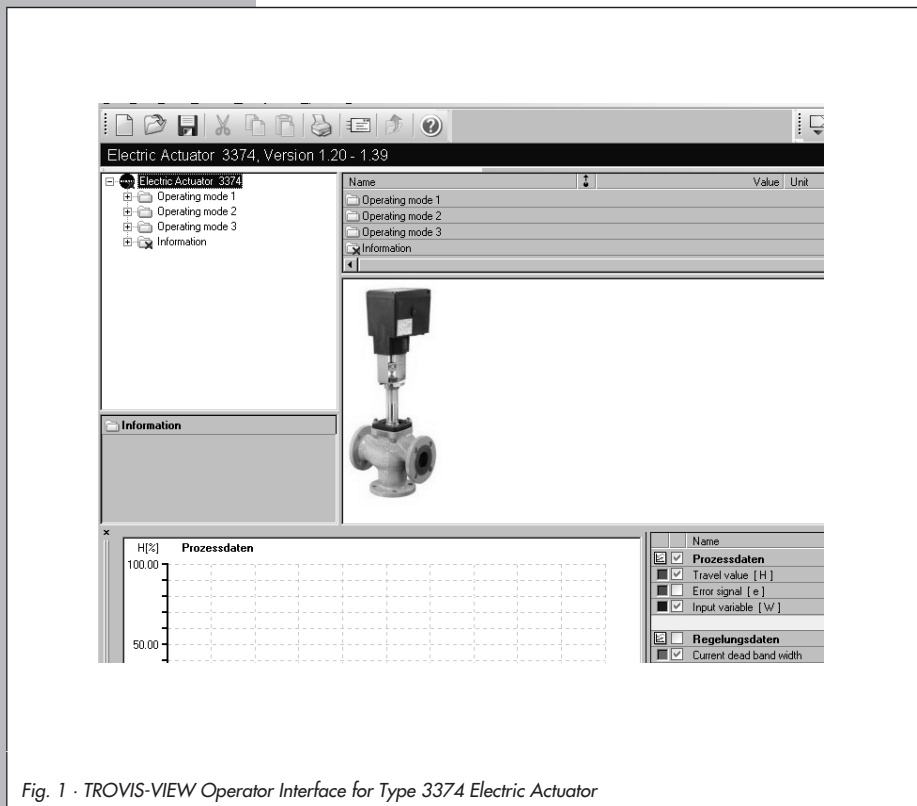


Fig. 1 · TROVIS-VIEW Operator Interface for Type 3374 Electric Actuator

Operating Instructions

EB 8331-2 EN

Firmware version 1.3x
Edition July 2005

Contents	Page
1	General 3
2	Settings in TROVIS-VIEW 4
2.1	Start-up 4
2.2	Starting TROVIS-VIEW and performing settings 6
2.3	Travel calibration 13
3	Additional positioner functions 15
3.1	Testing 15
3.2	Displaying setting data 16
3.3	Reporting defined events 17
4	Factory calibration 18
4.1	Calibration using TROVIS-VIEW software 19
4.1.1	Calibrating the input variable 20
4.1.2	Calibrating the position feedback signal 20
4.1.3	Calibrating the actuator 21
4.2	Simplest calibration method at the press of a button. 23
5	SAMSON memory pen 24
5.1	Downloading data to the positioner 26
5.2	Uploading data to the memory pen 28

Modifications of positioner firmware compared to previous version	
Previous 1.1	New 1.2
	In operating modes 1 and 2, travel calibration is also possible when the valve is closed even for versions with retracting actuator stem.
1.2	1.3x
	On upgrading a positioner or replacing it, an actuator calibration needs to be performed. This is also possible without TROVIS-VIEW software.

1 General

A CD-ROM containing the program for installing the TROVIS-VIEW Configuration and Operator Interface is provided by SAMSON.

Insert the installation CD-ROM to start the installation program. Once inserted, the CD-ROM usually starts the installation program automatically, depending on the configuration of the operating system. If the program does not start automatically, double-click `setup.exe` in the root directory of the CD-ROM in order to install TROVIS-VIEW.

Follow the on-screen prompts and instructions of the installation program. The system requirements are specified in the `readme.txt` file in the root directory of the CD-ROM.

The TROVIS-VIEW Operator Interface can be used for different SAMSON devices. Note that the installation program also offers you the option of installing a demo module. To use the software without restrictions, the software needs to be activated as described below:

After installation, a dialog box will appear, prompting you to enter the CD key, which you will find on the cover of the original CD-ROM. Once you have entered the correct CD key and initiated the activation process, a request code will be automatically generated. The *Activation* dialog box will come up displaying the generated request code and an Internet link to SAMSON's activation server where a unique activation code will then be generated and displayed. Enter this activation code in TROVIS-VIEW's *Activation* dialog box. The software is now ready for use without any restrictions in the purchased scope.

To enable communication with the PC, connect the serial interface to the serial interface (RJ-12 jack) at the actuator using a SAMSON connecting cable.

A hardware package including the connecting cable, memory pen, and modular adapter can be ordered (**order no. 1400-7704**). The memory pen is also available separately (order no. 1400-7697).

The positioner settings configured in TROVIS-VIEW can be directly transferred over the SAMSON connecting cable to the actuator on site. The transferred data are automatically checked to ensure that are complete and correct.

The travel calibration for the control valve is started by the operator interface. Positioner settings can also be uploaded and displayed in the operator interface.

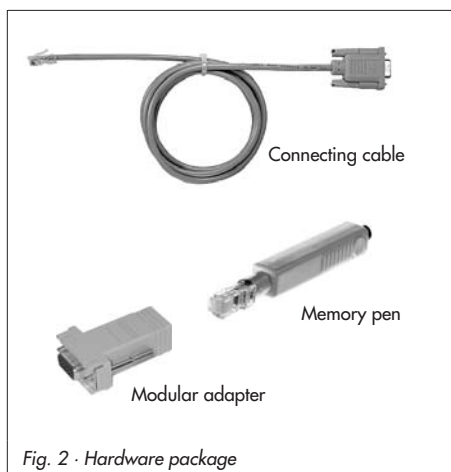


Fig. 2 · Hardware package

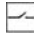
2 Settings in TROVIS-VIEW

2.1 Start-up

Note!

Before you set the positioner using the TROVIS-VIEW Operator Interface, you must first mount the actuator onto the valve as described in section 2.2 and establish the electrical connections as described in section 3 of the Mounting and Operating Instructions EB 8331-1 EN.

Refer to the online help [?] for a detailed description of TROVIS-VIEW.

1. Turn the selector switch (2) to operating mode **0** =  (control switched off).
2. Check if the rated travel indicated on top of the potentiometer gear (12) corresponds with the rated travel of the control valve.

The inscription for the rated travel ("Nennhub") is 15 (for 6 to 20 mm travel) on one side or 30 (for 6 to 35 mm travel) on the other side of the potentiometer gear.

If the rated travel indicated on top of the potentiometer gear and hence the mounting position of the gear does not correspond with the rated travel of the control valve, pull the gear off the shaft and put it back on again with the other side facing upward allowing the mating gear to engage properly.

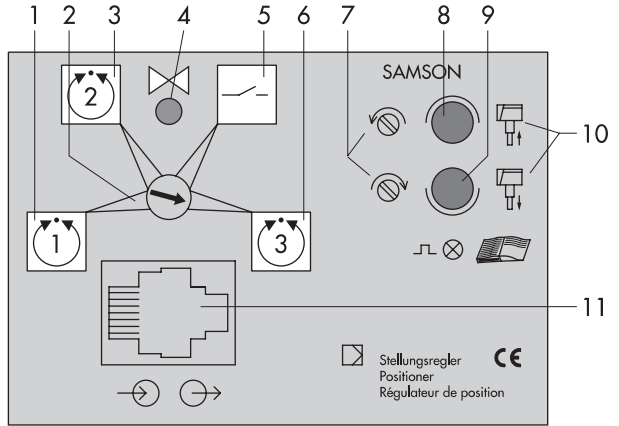
Make sure that the shaft of the potentiometer (12.1) is not adjusted.

Note!

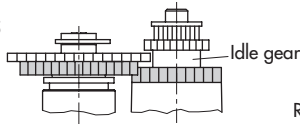
Actuators with fail-safe action "actuator stem retracts or extends" are only designed for a rated travel of 15 mm. Do not rearrange the gear in this case.

3. Switch on the auxiliary power.
4. Turn the selector switch (2) to operating mode **3**.
5. Establish communication between the PC and actuator using the SAMSON connecting cable.

- 1 Operating mode 1
- 2 Selector switch
- 3 Operating mode 2
- 4 Travel calibration button
- 5 Operating mode 0
- 6 Operating mode 3
- 7 Potentiometer shaft (12.1) clockwise or counterclockwise
- 8 Signal lamp
- 9 Signal lamp
- 10 Actuator stem extends or retracts
- 11 Jack (serial interface)
- 12 Potentiometer gear
- 12.1 Potentiometer shaft



Potentiometer gear (12.2) mounting position for rated travel 15



Potentiometer gear (12.2) mounting position for rated travel 30

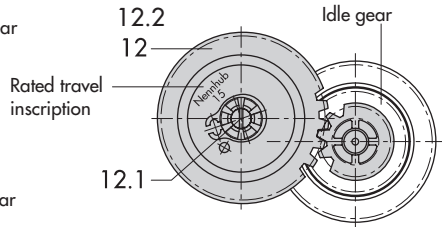
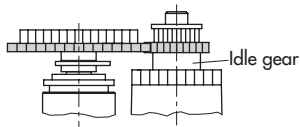



Fig. 3 · Selector switch and mounting position of the potentiometer gear

2.2 Starting TROVIS-VIEW and performing settings

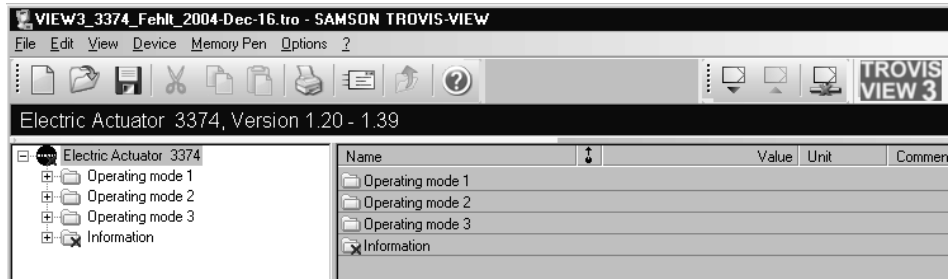
Note!


You can perform the settings in TROVIS-VIEW without the actuator being directly connected, i.e. in  offline mode and download the settings later onto the actuator.

When  online mode is selected, the PC is connected over the software directly to the actuator.

Online and offline modes can be switched between in the Device menu or by clicking the icon on the device toolbar.

1. Start TROVIS-VIEW.



To upload the setting data from the actuator onto the operator interface, select *Upload from Device* in *Device* menu or click  icon on the device toolbar.

- Click options in the *View* menu to select or deselect them. When the Trend Viewer is activated, all operating data are uploaded cyclically from the actuator in online mode and displayed in graphs. Right-click the graph to edit the graph or to save it in a file.

- In *Options* menu, select *Languages* to change the interface language. You can switch the language of the interface at anytime while the software is running.

- Select *Communications* in *Options* menu to open the communication window. Click on *Port settings* button to determine the port.

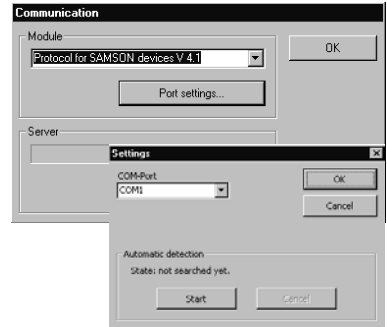
You can select the COM port manually or start the automatic detection. This function searches through all COM ports (max. 256) of the computer for the device (Type 3374 Actuator) or for the memory pen with 3374 data.

The search function is completed when the device or memory pen has been found.

- Select *User level* in *Device* menu in order to be able to enter or alter data.

The default setting of *Maintenance technician* only allows you to read setting data. *Expert* and *Factory calibration* requires the user to enter a password (max. 8 characters) which can be altered.

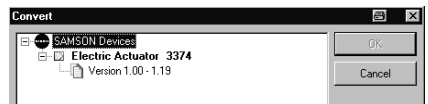
Default password: samson



When necessary:

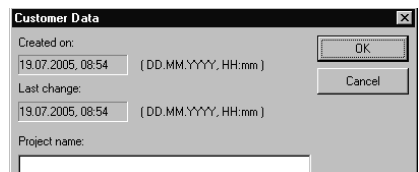
- Select *Convert* in *File* menu to choose the actuator firmware version.

It must match the version specified in the display bar.

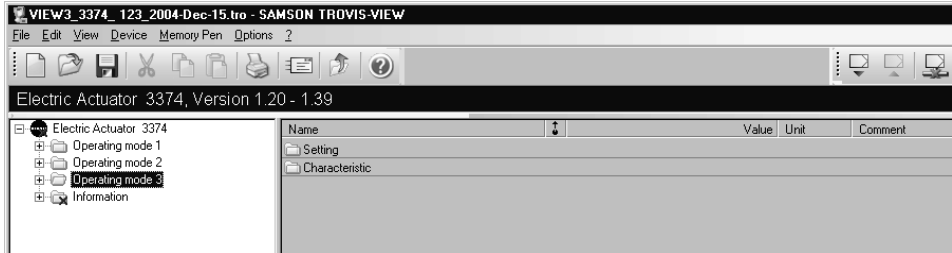


- Select *Customer data* in *Edit* menu to enter details on the plant, if required.

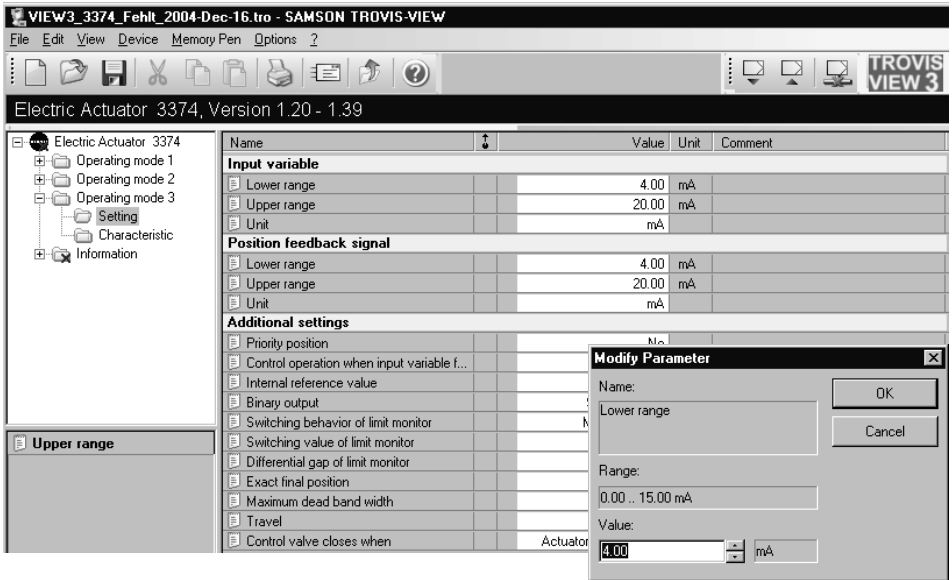
- Select *Load Factory Defaults* in *Edit* menu to load default settings onto the operator interface. Any configured data will be overwritten by the default data.



9. Double-click the *Operating mode 3* folder in the folder hierarchy.

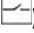


10. Right-click the *Setting* subfolder or the *Setting* row.
The current settings of the digital positioner are displayed.



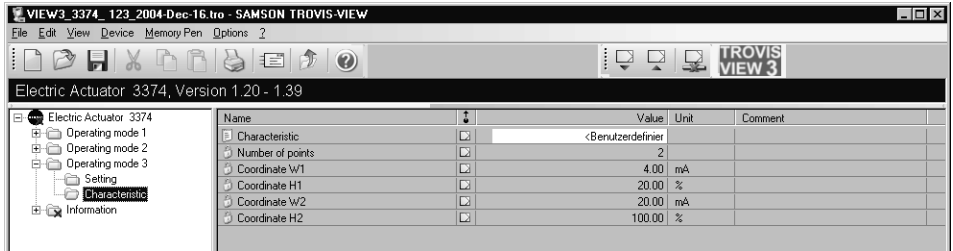
Left-click the corresponding row to select a parameter and double-click it to open the window to modify parameter settings.
Right-click the row to open the window to edit the parameter.

More details on the setting parameters are listed in the following table.

Parameter	Meaning
Input variable	
Lower range	The default values of the lower and upper ranges of the reference variable are 4 and 20 mA. If you, for example, want to connect two or more actuators in parallel to achieve split-range operation, set the lower range of the actuator between 0 and 75 % and the smallest span to 25 %.
Upper range	
Unit	
Position feedback signal	
Lower range	The position feedback signal is used for remote transmission of the current valve position and is usually the same as the input variable. The lower and upper ranges can be set between 0 and 20 mA or 0 to 10 V. The direction of action of the feedback signal can be reversed by setting lower range > upper range.
Upper range	
Unit	
Additional settings	
Priority position (binary input)	The priority position function is activated when the switching voltage exists at the terminals of the binary input. If the priority position function is triggered by an external signal at terminals 81 and 82 during the control operation, the actuator stem moves to the open position (actuator stem retracts) or to the closed position of the valve (actuator stem extends) according to the setting. For a mixing valve, the open and closed positions are reversed accordingly. If no signal exists at the terminals, the normal control operation following the input signal is active.
Control operation when input variable fails	This function allows you to determine whether the last travel value or the internal reference value (described below) is used for control operation when the input variable fails. This control operation is activated when the input variable falls below 0.5 V or 1 mA.
Internal reference value	Default setting 50 %, adjustable between 0 and 100 %.
Binary output	This function is used to determine whether the binary output signal serves as a status monitor, as a monitor for "control switched off" (Fig. 3: Selector switch 2 to Position 0 = ) or as a limit monitor.

Switching behavior of limit monitor	The binary output is activated when the value falls below the adjusted minimum limit or exceeds the maximum limit.
Switching value of limit monitor	The binary output is reset when the value exceeds the minimum limit or falls below the maximum limit plus the adjustable differential gap. Limit monitor function: Setting in % in relation to the travel position of the valve.
Exact final position	When this function is activated, the plug stem moves into its exact final position in the closing phase. As soon as the travel position is reached which is closer to the closing position than the current dead band width, the motor is controlled over a constant signal. The current dead band is continuously measured by the actuator and is always smaller than the maximum dead band width. The actuator in the closing position is switched off by the limit switches.
Maximum dead band width	Adjustable between 1.1 and 5.0 %. A corresponding change in the input signal always leads to a travel movement.
Travel	(if SAMSON memory pen is used) In case the travel range of the control valve is transferred by the SAMSON memory pen, you can set the travel to any value between 6.0 and 35.0 mm.
Control valve closes when	(if SAMSON memory pen is used) This function is used to determine whether the control valve is to close when the actuator stem "extends" or "retracts".

11. Double-click the *Characteristic* subfolder and then double-click the *Characteristic* row in the list to open the *Characteristic* dialog box.



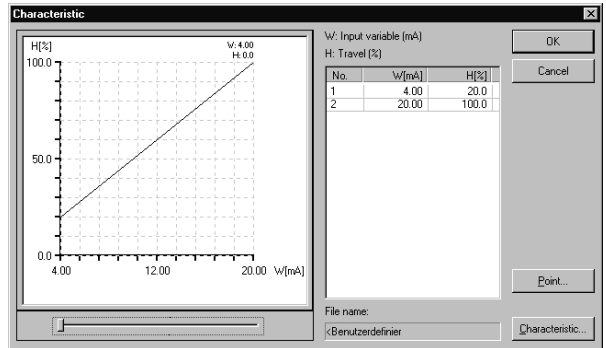
This dialog box displays the set characteristic and its coordinates.


The default characteristic appears as User-defined and is a linear characteristic defined by two coordinates.

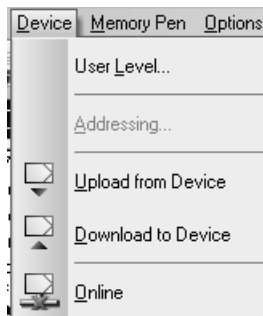
Click *Point* button and select *Add* to enter coordinates (maximum 11) for a freely configurable characteristic.

Click *Characteristic* button and select *Save* to save the new characteristic.

To open default and saved characteristics, select *File* and *Open* on clicking the *Characteristic* button. The files are stored in C:\programme\samson\view3\3374\deu/. The characteristics are saved on installing the TROVIS-VIEW software in the directory "view3...".





12. Select *Download to Device* in *Device* menu or click  on the device toolbar to download data from the operator interface to the actuator.
Click *OK* to confirm prompted message.



Note!

You can reset the data that you have modified to the default setting at any time. To reset the data, select *Load Factory Defaults* in the *Edit* menu.

Select *Upload from Device* in the *Device* menu or click  on the device toolbar to transfer all setting data of the control valve to the operator interface where you can check and modify them, if necessary.

Select *Download to Device* in the *Device* menu or click  on the device toolbar in order to transfer the modified setting data back to the actuator.

Note that you can activate and deactivate the *Additionally Read Factory Setting* function by clicking on the *Device* menu and selecting *Additionally Read Factory Setting*.

You can print the setting data by selecting *Print* in the *File* menu.

2.3 Travel calibration

After downloading all the setting data to the actuator, you can calibrate the travel.



Caution!

The automatic travel calibration lasts approximately twice as long as the actuator's transit time. During this, the valve moves out of its present position. Carry out the travel calibration on the test bench or when the shut-off valves in the plant are closed.

1. Select *Calibration of Control Valve* in *Device* menu to open the *Calibration of Control Valve* dialog box.

2. In this box, check either *Calibration to Maximum travel range* or to *Limited travel range* and determine whether the control valve closes when the actuator stem retracts or extends.
3. In order to initialize the travel calibration, click *Start Calibration* button. The progress bar indicates the calibration progress. Read the messages displayed in the status field!

Note!

If the status field reads "Potentiometer setting is incorrect", the corresponding signal lamp of the positioner board starts to blink indicating that the potentiometer gear (12) has been wrongly positioned and must be readjusted manually (see Fig. 2).

However, do not alter the potentiometer gear until the closed position is actually reached.

You can recognize when the closed position is reached by looking at the associated limit switch located on the board which is activated by the tag (refer to EB 8331-1 EN, Fig. 5).

To proceed, use a screwdriver to gradually turn the potentiometer shaft (12.1) clockwise or counterclockwise in accordance with the symbols (7) until the signal lamp stops blinking and is lit constantly.

Turn the screwdriver counterclockwise if the upper signal lamp (8) blinks and turn it clockwise if the lower signal lamp (9) blinks. The travel calibration will not continue until both signal lamps are lit at the same time.

If the status field reads "Mounting position of potentiometer gear is incorrect" during the travel calibration, check if the correct side of the gear is facing upwards.

If there is no travel movement during the calibration (caused by a loose or missing potentiometer gear, for example), the two signal lamps blink alternately. Then, the travel calibration is canceled after a short period of time and the error message "Controlled variable does not change!" is displayed. Click OK, remedy the error and then restart the travel calibration.

If the status field reads "Calibration finished", the travel has been calibrated successfully. The actuator starts its control operation in response to its reference variable.

4. Close the *Calibration of Control Valve* dialog box and interrupt communication by disconnecting the SAMSON connecting cable.

3 Additional positioner functions

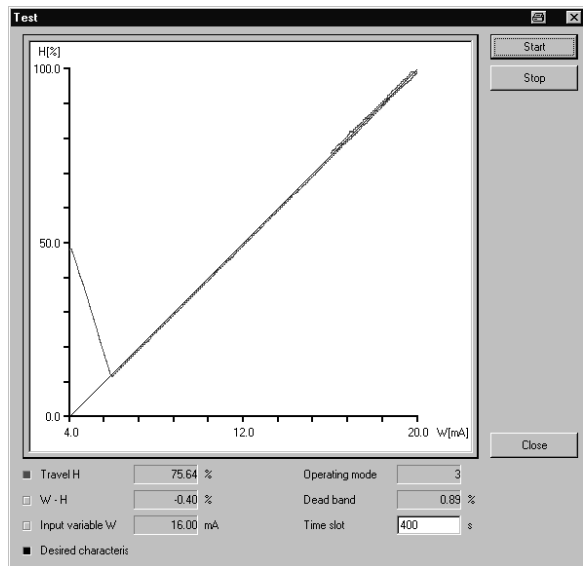
3.1 Testing

To start the test run, select *Test* in *Device* menu and then select *Start*. Note that you can only perform the test run in one of the operating modes **1**, **2** and **3**. In order to select one of the operating modes, turn the selector switch (2) of the positioner to the corresponding operating mode.

The test run starts to generate an input variable which increases from the determined lower range (if the input variable corresponds to the lower range value) to the determined upper range at a constant rate. When it reaches the upper range value, it automatically switches over and continuously decreases until it reaches the lower range again and stops the test run.


This continuously changing input signal is transferred from the operator interface to the positioner of the actuator during the test run and causes the control valve to open or close according to the increasing or decreasing signal. The resulting travel position of the control valve, the difference between the input variable and the travel position as well as the current dead band width are continuously transferred from the positioner to the operator interface during the test run and their continuously changing values can be monitored on the operator interface.

The changing values of the input variable (reference variable w) and travel position (controlled variable x) are displayed in a graph. The input variable and the travel position as well as their difference in percent, the current dead band width and the operating mode are displayed numerically. You can determine the rate of change of the input variable by entering a time parameter in the *Time slot* text box. The time parameter determines the transit time from the lower range to the upper range of the input variable. This parameter should exceed the transit time of the actuator.

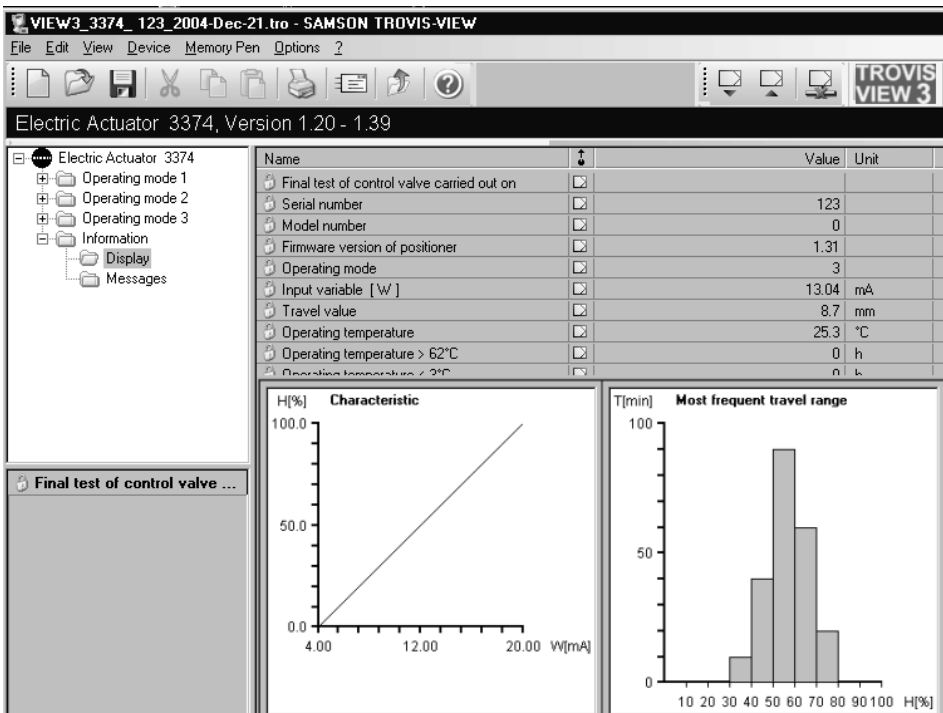


3.2 Displaying setting data

In order to display the key setting data of the positioner, double-click the *Information* folder and then the *Display* subfolder in the folder hierarchy.

Select *Upload from Device* in *Device* menu or click  on the device toolbar to upload the current setting data and other information from the positioner and to display them on screen. The displayed data may differ depending on the operating mode selected.

The relation between the input variable and the travel position and the characteristic are displayed in graphs.



The screenshot shows the TROVIS VIEW 3 software interface for an Electric Actuator 3374, Version 1.20 - 1.39. The interface includes a menu bar (File, Edit, View, Device, Memory Pen, Options ?), a toolbar with various icons, and a folder tree on the left. The folder tree shows the following structure:

- Electric Actuator 3374
 - Operating mode 1
 - Operating mode 2
 - Operating mode 3
 - Information
 - Display
 - Messages

The main window displays a table of data with the following columns: Name, Value, and Unit. The data is as follows:

Name	Value	Unit
Final test of control valve carried out on		
Serial number	123	
Model number	0	
Firmware version of positioner	1.31	
Operating mode	3	
Input variable [W]	13.04	mA
Travel value	8.7	mm
Operating temperature	25.3	°C
Operating temperature > 62°C	0	h
Operating temperature > 2°C	n	h


Below the table, there are two graphs:

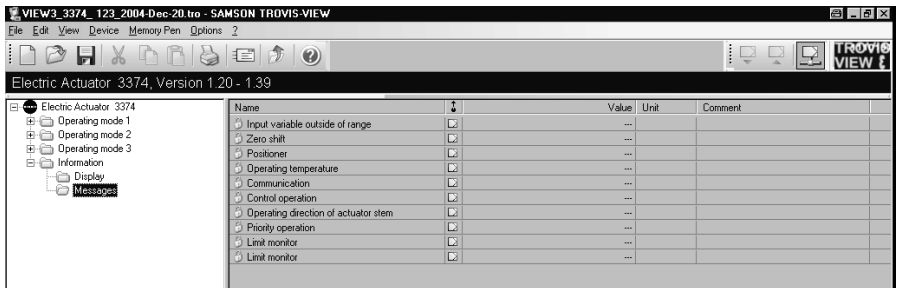
- Characteristic:** A line graph showing the relationship between the input variable W [mA] (x-axis, 4.00 to 20.00) and the travel value H [%] (y-axis, 0.0 to 100.0). The graph shows a linear relationship starting at (4.00, 0.0) and ending at (20.00, 100.0).
- Most frequent travel range:** A histogram showing the distribution of travel values H [%] (x-axis, 10 to 100) and the number of occurrences T [min] (y-axis, 0 to 100). The distribution is centered around 60-70%.

At the bottom left, there is a button labeled "Final test of control valve ...".

3.3 Reporting defined events

In order to display the events which have occurred during the control operation of the positioner, double-click the *Information* folder and then the *Messages* subfolder in the folder hierarchy.

Select *Upload from Device* in *Device* menu or click  on the device toolbar to upload the current setting data on the operator interface.



Possible defined events:

- ▶ Input variable outside of range [< 0 %; > 105 %]
- ▶ Zero shift [has occurred]
Initialization if travel > 5 % and travel rate = 0 mm/s and input variable corresponds to the lower range of the reference variable
- ▶ Positioner [cannot calibrate]
if error > 2 dead band widths and travel rate = 0 mm/s; time-delayed message
- ▶ Operating temperature [outside of operating range]
if temperature < 1 °C or > 64 °C
- ▶ Communication [inactive]
if time-monitored data traffic does not take place
- ▶ Control operation [with last travel value; with internal reference value]
when input variable fails

- ▶ Operating direction of actuator stem [check]
displayed when the closed position of the control valve does not match on switching the operating mode 3 to 1 or 2 or vice versa
- ▶ Priority operation [active]
if binary input is active
- ▶ Limit monitor [active]
if set limit value is not reached or is exceeded.
- ▶ Transmitter controlled variable

4 Factory calibration

The factory calibration comprises the basic setting of the positioner, the travel calibration of the actuator as well as the entering of the serial number and is carried out at the factory.

If necessary, for example, if you have replaced the electronic components, you can also carry out the factory calibration at the place of installation of the actuator. There are two different approaches to calibration:

- ▶ Best method to perform the calibration involves using a PC, the TROVIS-VIEW Operator Interface, a current or a voltage source, a sufficiently precise ammeter or voltmeter and a sufficiently precise, mechanical length measuring instrument. This method allows the operation of the actuator with the best precision.
- ▶ Simplest method to perform the calibration is possible on site without additional tools such as a PC installed with the TROVIS-VIEW software or the measuring instruments. This method may be used for actuator settings for HVAC applications.


Note!

The factory calibration requires that the actuator be isolated from the control valve.

The rated travel of the actuator (see nameplate) must be the same as the inscription "Nennhub 15" or "Nennhub 30" printed on the gear that faces upwards. If this is not the case, rearrange the gear as described in section 2.1.


After factory calibration is completed, you have to recalibrate the travel of the control valve!

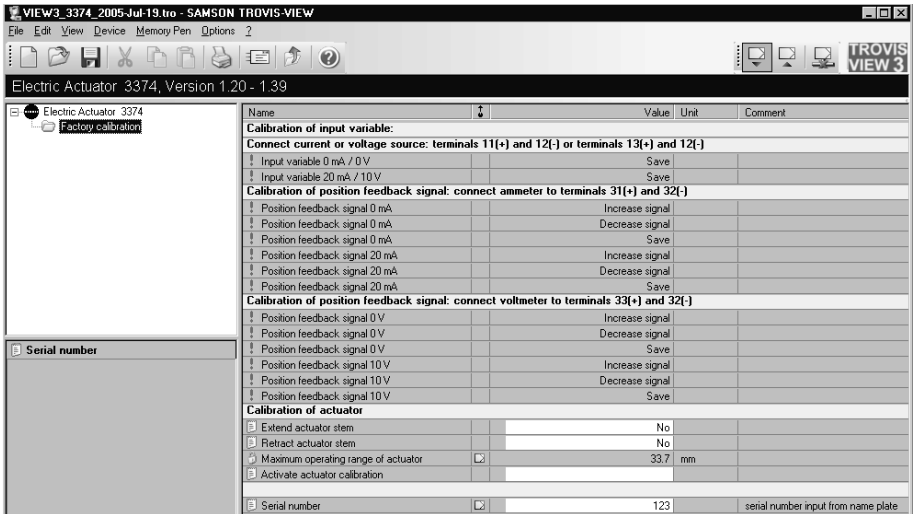
4.1 Calibration using TROVIS-VIEW software

1. Connect the PC to the interface of the positioner using the SAMSON connecting cable. Establish the electrical connection according to the wiring diagram. Switch on voltage supply.
2. Turn the selector switch (2) to operating mode 0 = .
3. Start TROVIS-VIEW.

4. Select *User level* in *Device* menu.
Choose *Factory calibration* from the drop-down list.
Enter the required password "samson" and click *OK*.



5. Select *Upload from Device* in *Device* menu or click  on the device toolbar to upload the current setting data onto the operator interface.



4.1.1 Calibrating the input variable

6. Connect an input signal of 0 V.
Right-click the *Input variable* row and select Execute to start calibration. After the calibration is completed, the setting is saved and indicated by a controller symbol.
Connect an input signal of 10 V.
Right-click the *Input variable* row and select Execute to start calibration. After the calibration is completed, the setting is saved and indicated by a controller symbol.
7. An additional calibration of the mA input signal is not absolutely necessary. If this is not the case, proceed as described previously for the V input signal.

4.1.2 Calibrating the position feedback signal

8. Calibrate position feedback signal to 0 mA.
Depending on the existing output signal, right-click the *Increase signal* or *Decrease signal* row and select Execute.
As soon as the correct reading is displayed at the measuring device, click Save and select Execute.
After the calibration is completed, the setting is saved and indicated by a controller symbol.

Calibrate position feedback signal to 20 mA.
Right-click the *Increase signal* row and select *Execute* until the reading at the measuring device is 20 mA.
Click Save and select Execute. After the calibration is completed, the setting is saved and indicated by a controller symbol.
9. Calibrate the position feedback signal 0 and 10 V in the same way as for the mA signal.

4.1.3 Calibrating the actuator

Actuator stem extends

10. Right-click *Extend actuator stem* row and select *Modify* in the pop-up menu.
Right-click *Extend actuator stem* row again and select *Write* in the pop-up menu.
The actuator stem extends until the limit switch switches off the actuator.
11. Measure the length of the actuator stem up to where the thread of the housing starts and write it down.
12. Right-click *Extend actuator stem* row and select *Modify* in the pop-up menu.
Select *No* from the drop-down list for the value in the *Modify Parameter* dialog box and click OK button to confirm.

Calibration of actuator					
Extend actuator stem				No	
Retract actuator stem				No	
Maximum open time			<input type="checkbox"/>	33.7	mm
Activate actuator					
Serial number			<input type="checkbox"/>	123	serial number

Modify Parameter ✕

Name: OK

Value: Cancel

Actuator stem retracts

13. Right-click *Retract actuator stem* row and select *Modify* in the pop-up menu.
Select *Yes* from the drop-down list for the value in the *Modify Parameter* dialog box and click OK button to confirm.
Right-click *Retract actuator stem* row again and select *Write* in the pop-up menu.
The actuator stem extends until the limit switch switches off the actuator.

14. Measure the length of the actuator stem up to where the thread of the housing starts and write it down. The difference between the final positions that you have measured is the maximum operating range of the actuator.
15. Right-click *Retract actuator stem* row and select *Modify* in the pop-up menu. Reselect *No* from the drop-down list for the value in the *Modify Parameter* dialog box and click OK button to confirm.

Serial number

16. Right-click *Serial number* row and select *Modify* in the pop-up menu. Enter the serial number from the nameplate for the value in the *Modify Parameter* dialog box and click OK button to confirm.

Note!

The actuator cannot be calibrated before the serial number has been entered. If you do not have the serial number, enter a value greater than 0.

Activate the calibration

17. Right-click *Activate actuator calibration* row and select *Modify* in the pop-up menu. In the pop-up window, enter the values for mains frequency, rated travel and nominal actuating time as written on the nameplate. Enter the maximum operating range of the actuator in mm that you previously measured, however, the value may not be greater than 35 mm.
18. Click *Start Calibration* button to perform the calibration.

Calibration of Actuator

Mains frequenc: 50 Hz

Rated travel: 30 mm

Nominal actuat: 240 s

Maximum operating range of actuator:
33.7 mm [30.0 .. 35.0]

Status:

Start Calibration Cancel Close


Note!

If the factory calibration has not been carried out completely, the signal lamp (9) starts to blink. The message that the calibration or the serial number is missing is displayed in the "Calibration has not been carried out completely" section of the *Messages* subfolder in the *Information* folder.

19. To exit the calibration parameter, select *User Level* in *Device* menu and change the user level to *Maintenance technician* or *Expert*.
Enter the required password (samson) again on selecting *Expert*.

4.2 Simplest calibration method at the press of a button

If tools such as the TROVIS-VIEW software, PC etc. are not available for calibration of the actuator and the actuator operation with maximum precision is not necessary, the simplest calibration method can be performed as follows:

1. Position the selector switch (2) to operating mode **0** = .
2. Press down the travel calibration button (4) for at least 15 seconds until both signal lamps light up.
3. Release the button to start calibration.
The actuator stem extends until the torque-dependent switches switch off the actuator.
The position of the potentiometer is checked.
4. Re-adjust the potentiometer, if necessary, while observing the signal lamps. Refer to the description given on page 14.
After adjusting the potentiometer, the calibration of the actuator is continued.
On completion of the calibration, the maximum travel is set to 20 mm or 35 mm, depending on the position of the gear.
The serial number is set to 999 999.
5. Mount the actuator on the valve.
6. Perform the calibration of the control valve.

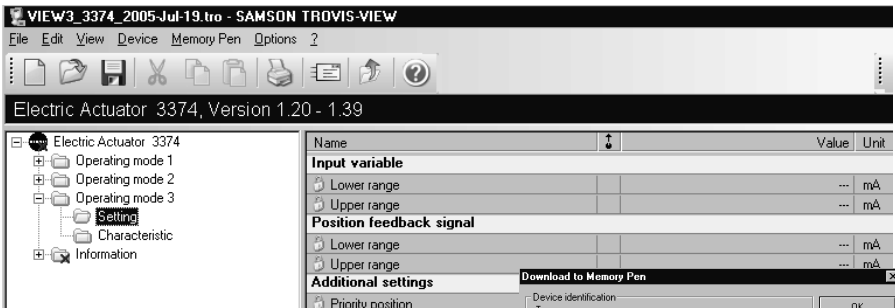
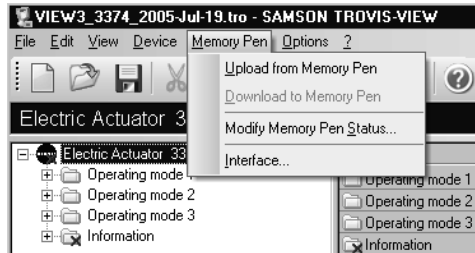
You can perform this calibration in TROVIS-VIEW as described in section 2.3 on travel calibration.

If you do not have this software, proceed as described in section 4.3 on Setting the digital positioner in the Mounting and Operating Instructions EB 8331-1 EN

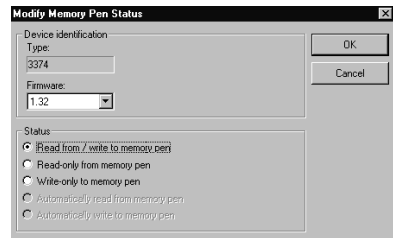
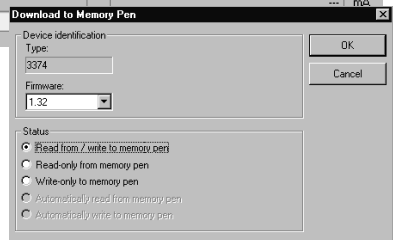
5 SAMSON memory pen

The SAMSON memory pen (Order No.1400-7697) is able to load and store data in its non-volatile memory and serves as a data carrier to transfer the setting data of the positioner from the TROVIS-VIEW Operator Interface to the actuator and vice versa.

You can select the most relevant functions from the *Memory Pen* menu such as *Upload from Memory Pen*, *Download to Memory Pen*, *Modify Memory Pen Status* and *Interface*.

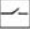


Note that you need a SAMSON modular adapter (Order No.1400-7698) to transfer the setting data from the PC to the memory pen and vice versa. In order to transfer the setting data from the memory pen to the positioner and vice versa, you do not require any adapter because the connector of the memory pen fits the jack of the positioner board. The SAMSON memory pen makes it easy to exchange data with the positioner. The memory pen enables you, for example, to copy the setting data of one positioner to the positioner of another actuator of the same type. You can also download the setting data from a PC or notebook to the memory pen when you are, for example, in your office or at the place of installation of the control valve.



Then, you can download this data to the positioner of the corresponding actuator on site. Furthermore, you can archive the setting data of the positioner of your actuator in the memory pen. If you have to replace this actuator by a new one, you can download the archived setting data from the memory pen to the new actuator.

Note that the calibration data needed for setting the hardware components of the positioner can only be loaded and transferred using the operator interface and not by means of the SAMSON memory pen. The memory pen can only be used to load and transfer the setting data of the positioner.

If you want to use the memory pen to transfer the setting data to the positioner, for example, first set the selector switch (2, Fig. 2) on the actuator to operating mode 0 =  and then insert the memory pen into the jack of the actuator. The associated signal lamp (9) starts to blink for about 10 seconds to indicate that communication has been established successfully and that the setting data are being checked.

If the transferred data are considered to be incorrect, corrupt or incompatible, the data transfer is canceled and the signal lamp (9) is not lit continuously. In this case, connect the memory pen to the PC via the adapter, open the *Setting* folder of the corresponding Operating mode folder and then select *Upload from Memory Pen* in *Memory Pen* menu of the TROVIS-VIEW Operator Interface to display and check the data stored in the memory pen.

To activate the control operation with the new setting data, reset the selector switch (2) on the positioner to operating mode 3.

The setting data can only be transferred for operating mode 3.

Transferring setting data to the positioner in operating modes 1 or 2 is not possible (exception: unit selection mA/V for input variable and position feedback signal).

Reading the setting data of the positioner is possible for both the memory pen and for the operator interface from every operating mode. All the setting data of the operating modes are usually read.

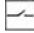
Note!

Select Additional settings in the Setting folder to set the travel and closed position of the control valve when using the memory pen.

5.1 Downloading data to the positioner

Note!

Before you download data from the SAMSON memory pen to the positioner, you must first mount the actuator onto the control valve as described in section 2.2 and establish the electrical connections as described in section 3 of the Mounting and Operating Instructions EB 8331-1 EN.

1. Turn selector switch (2) to operating mode **0** = 
(control switched off, see Fig. 3 on page 5)
2. Check if the rated travel indicated on top of the potentiometer gear (12.2) corresponds with the rated travel of the control valve.

The inscription for rated travel ("Nennhub") is 15 (for 6 to 20 mm travel) on one side or 30 (for 6 to 35 mm travel) on the other side of the potentiometer gear.

If the rated travel indicated on top of the potentiometer gear and hence the mounting position of the gear (see Fig. 2) does not correspond with the rated travel of the control valve, pull the gear off the shaft and put it back on again with the other side facing upward, allowing the mating gear to engage properly.

Make sure that the shaft of the potentiometer (12) is not altered.

Note!

Actuators with fail-safe action "actuator stem retracts or extends" are only designed for rated travel 15 mm. Do not rearrange the gear in this case.

3. Switch on auxiliary power.
4. Plug the SAMSON memory pen into the jack (11) of the positioner board and wait until the signal lamp (9) stops blinking and remains illuminated.
5. If you want to use the travel value and the closed position of the control valve indicated in Additional settings of the *Setting* subfolder, initialize the travel calibration by activating the travel calibration button (4).

If, however, this is not the case, disconnect the memory pen from the jack, set the selector switch (2) to operating mode **3** and perform the travel calibration according to section 4.3 of the Mounting and Operating Instructions EB 8331-1 EN.

**Caution!**

The automatic travel calibration lasts approximately twice as long as the actuator's transit time. During this, the valve moves out of its present position. Perform the travel calibration on the test bench or when the shut-off valves in the plant are closed.

After activating the travel calibration button (4), both signal lamps (8 and 9) remain illuminated at the same time to indicate the beginning of the travel calibration. The actuator stem extends as far as the closed position of the valve. The mounting position of the potentiometer gear (12.2) is determined automatically and signaled by the illumination of the signal lamp (8) for 6 to 35 mm travel and the signal lamp (9) for 6 to 20 mm travel. The actuator stem retracts as far as the open position (maximum travel). When the maximum travel position is reached, the travel calibration has been completed. The actuator starts its control operation and the actuator stem moves to the valve position determined by the reference variable.

Caution!

If one signal lamp starts to blink slowly after the travel calibration button has been activated and the actuator stem has extended as far as the closed position, the potentiometer (12) has been wrongly positioned and must be readjusted manually.

However, do not alter the potentiometer until the closed position is actually reached. The closed position is indicated by the associated limit switch located on the board and activated by the tag. To proceed, use a screwdriver to turn the shaft of the potentiometer gradually clockwise or counterclockwise until the signal lamp stops blinking and remains illuminated. Turn the screwdriver counterclockwise in accordance with the symbols (7) if the upper signal lamp (8) blinks and turn it clockwise if the lower signal lamp (9) blinks.

The travel calibration does not continue until both signal lamps are lit at the same time.

Note!

If both signal lamps start to blink at the same time during the travel calibration, disconnect the memory pen from the jack and cancel the calibration by pressing the travel calibration button.

Recheck the mounting position of the potentiometer gear (12.2) and/or the travel value indicated in Additional settings of the Setting folder.

If there is no travel movement during the calibration (due to a loose or missing potentiometer gear, for example), both signal lamps blink in alternating sequence. In this case, cancel the travel calibration by pressing the travel calibration button (4), remedy the error and restart the calibration by pressing the travel calibration button (4) again.

6. Disconnect the memory pen from the jack.
7. Set the selector switch (2) to operating mode **3**.

Note!

The travel calibration only needs to be performed once to start up the valve.

5.2 Uploading data to the memory pen

1. Plug the SAMSON memory pen into the jack of the positioner board and wait until the signal lamp (9) stops blinking and is then lit continuously.
2. Disconnect the SAMSON memory pen from the jack (11).

The setting data of the positioner is stored in the memory pen and can be transferred to other actuators or can be downloaded to the PC.

Note!:

You can only transfer the setting data from the positioner to the SAMSON memory pen if you have selected one of the operating modes **1, 2 or 3!**



SAMSON AG · MESS- UND REGELTECHNIK
Weismüllerstraße 3 · 60314 Frankfurt am Main · Germany
Phone: +49 69 4009-0 · Fax: +49 69 4009-1507
Internet: <http://www.samson.de>

EB 8331-2 EN

S/Z 2005-10