

Application

Web terminal to indicate and set all relevant data of a building automation system.



The TROVIS 6615 Web Terminal is used together with the TROVIS 6610 CPU Module and suitable for panel mounting in switch cabinets.

- Indication of operating data
- Fully graphical display
- Operation, e.g. setting parameters or changing set points, on a touch screen

TROVIS 6615 works as a web client under Windows® CE. All data of the web server in the TROVIS 6610 CPU Module can be accessed using a Java-enabled browser. An unlimited number of web terminals can be connected to a CPU module. One web terminal can be used to visualize data from multiple TROVIS 6610 modules.

All plant schemes are saved in the TROVIS 6610 CPU Module.

The web terminal indicates, e.g. color plant schemes with dynamically refreshed values. Data, such as set points, schedules etc., can conveniently be changed on a touch screen.

An alarm list records events in chronological order with an associated comment.

Long-term data are recorded as trend graphs and can be displayed in different colors for easy distinction. Historical data can be saved to a storage medium, which can be plugged into the USB port, for further processing, e.g. in Microsoft Excel®.

It communicates with the TROVIS 6610 CPU Module over Ethernet TCP/IP.

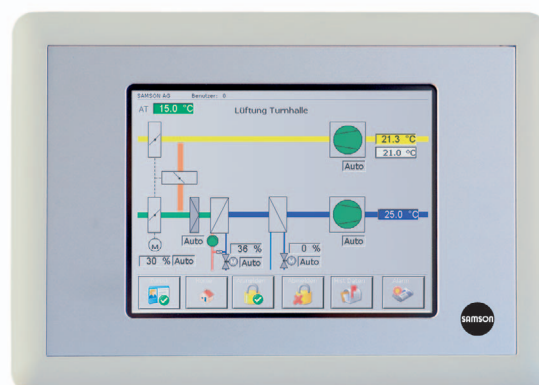


Fig. 1 · TROVIS 6615 Web Terminal

Technical data

| Power supply | |
|--------------------------------------|---|
| Supply voltage | 24 V AC |
| Frequency range | 48 to 62 Hz |
| Power consumption | 7 VA |
| Protective earth | 1.5 mm ² |
| Temperature range | |
| Operation | 0 to 55 °C |
| Storage and transportation | -20 to 70 °C |
| Relative air humidity | Normal, no dew formation |
| Electromagnetic compatibility | |
| Noise emission | According to EN 61000-6-3 |
| Noise immunity | According to EN 61000-6-2 |
| Features | |
| Display | 5.7" TFT |
| Resolution | VGA 640 x 480 pixel including touch panel with CCFL backlight inverter |
| Interfaces | |
| USB | 1 x USB 2.0 |
| RS-232 | 1 x 9-pole |
| Ethernet 10/100 MBit/s | 1 x RJ 45 |
| Dimensions | |
| Front dimensions | 208 x 148 mm |
| Panel cut-out | 178 x 122 mm |

