

Application:

Implementation of tasks in automation, control, management and communication (BACnet) by linking customizable function blocks in a graphical user interface that runs under Microsoft Windows.

Operating the graphical project management tool requires no programming knowledge. The software enables you to link customizable function blocks. An extensive library provides blocks for logical (boolean), arithmetic and relational operations as well as time management and control functions. In addition, complex building automation functions, e.g. adaptation, energy optimization, enthalpy control, peak load optimization, operating hours counting, command execution monitoring etc., can be implemented.

Customized macros can be generated from the included blocks; complete structures and applications can be copied. For start-up, the online values are fed back to the created plant scheme. Suitable menus are available for each object to enable communication using BACnet (DIN EN ISO 16484-5).

The software tool is available in English, German and French (further languages on request). The interface language can be switched.

TROVIS
Electronics from SAMSON

8847158_Spassbad_Helgoland - SAMSON TROVIS 6690

Project Actions View Start-up Extras Documentation Help

Process Model

8847158_Spassbad_Helgoland

- Heat generation
 - Boiler 1 (12 kW)
 - Boiler 2 (1.2 MW)
 - Cogeneration plant
- 01 Heat distribution
 - Flow distributor
 - Basement
 - Return flow collector

8847158_Spassbad_Helgoland\Heat distribution\Flow distributor\Basement

Object Library

CPU 011 UE-07
Outdoor_temp_North
AE
1/2

CPU 011 UE-08
Distributor_basement_Flow
AE
1/3

CPU 011 UE-11
Distributor_basement_Pi
BE
1/4

CPU 011 UE-10
Distributor_basement_Pi
BE
1/5

CPU 011 UE-09
Distributor_basement_Pi
BE
1/6

Outdoor_temp_North_AE

Distributor_basement_Flow_AE

Distributor_basement_Pu1A_BE

Distributor_basement_Pu1S_BE

Distributor_basement_Pu1B_BE

VREG 1/1

AT +Y ▷

VL -Y ▷

ZEITP Y ▷

BTRLS ZUSTH Y ▷

BTR-Z VLSOL ▷

SO/WI BTRZA ▷

MA-LS PU ▷

WALS PU-H ▷

PU-A PU-Z ▷

PU-S YSTET ▷

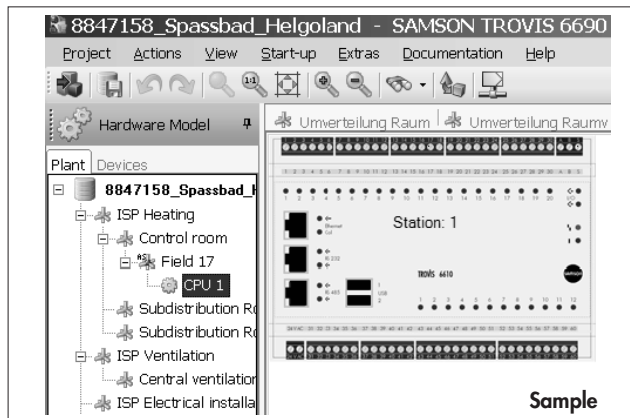
PU-B

PU-LS

FB_1

Member of **BACnet**
Interest Group Europe

The software starts with the **Hardware Model** view.

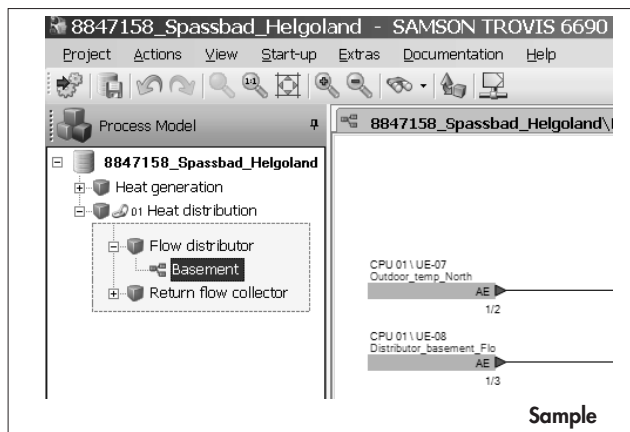


Sample

Arrange the required hardware components from the TROVIS 6600 Series or other automation systems (if applicable) in the appropriate window section.

After arranging and configuring the hardware components required for your task, name the physical data points. The software will generate assignment lists to build the switch cabinet and start up the system.

The software application is created in the **Process Model** view.

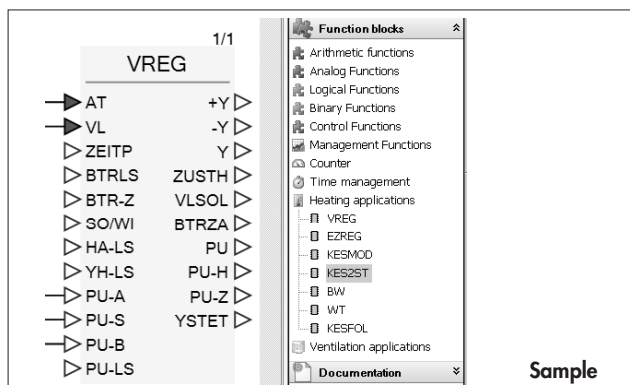


Sample

Determine the logical structure of your project as required. The process model helps you keep a clear overview.

The number of characters for names and designations is unlimited, which allows you to tailor the project to your or your customers' specific requirements.

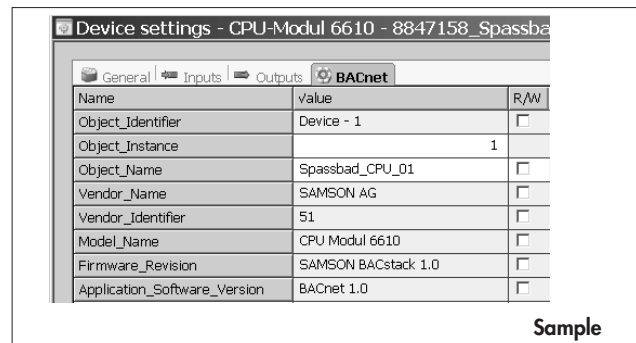
The actual linking of **Function Blocks** is done with the help of menus.



Sample

An extensive library provides blocks for logical (boolean), arithmetic and relational operations as well as time management and control functions. In addition, complex building automation functions, e.g. adaptation, energy optimization, enthalpy control, peak load optimization, operating hours counting, command execution monitoring etc., can be implemented.

Enter the specific **Device settings** for each data point and BACnet object.



Sample

The tool provides support while creating and managing a project so that invalid inputs are avoided. Extensive help on using the software and on the different function blocks is also available.

Minimum hardware requirements

- PC with Pentium or equivalent processor (1 GHz or faster)
- Network connection (100 MB)
- At least 512 MB RAM, recommended: 1 GB RAM
- At least 150 MB free disk space plus approx. 10 to 15 MB free disk space per application
- SVGA graphics board (at least 800 x 600)
- CD-ROM drive

Minimum software requirements

- Microsoft Windows XP Professional
- Microsoft .NET Framework Version 2.0 (included on installation CD)
- Microsoft Internet Explorer 6.0 and higher
- Acrobat Reader

Scope of supply

- The TROVIS 6690 Graphical Project Management Tool is delivered on a CD-ROM with online documentation.
- Software updates are available on the SAMSON website at <http://www.samson.de> in the Services -> Support & Downloads area.

