

Type 3251 Globe Valve

Your contact details:

Title:

Name:

Company:

Customer no.

Street:

ZIP/postal code, city:

Country:

E-mail:

Phone:

Ordering spare parts

The spare parts for Type 3251 are listed on the next pages. This document can also be used for ordering:

1. Fill in your contact data and information on the product.
2. Enter the quantity of spare parts needed.
3. Click [Send form] button to attach the PDF form to an e-mail.
4. Attach additional information (e.g. invoice, photos) to the e-mail, if necessary.
5. Send e-mail to spareparts@samson.de.

Either

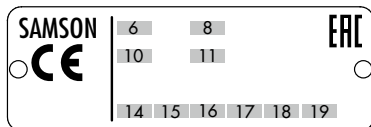
Configuration ID (Var-ID):

or

SAMSON order no.:

Position in order:

or



6

Type designation:

3251

8

Material:

10

Valve size:

11

Pressure rating:

14

Flow coefficient:

15

Characteristic:

16

Seat-plug seal:

17

Seat code:

18

Pressure balancing:

19

Flow divider/AC trim:

Version

Standard bonnet

With insulating section

With bellows seal

Application

NACE

Oxygen

Industrial gases

Chlorine

Send form

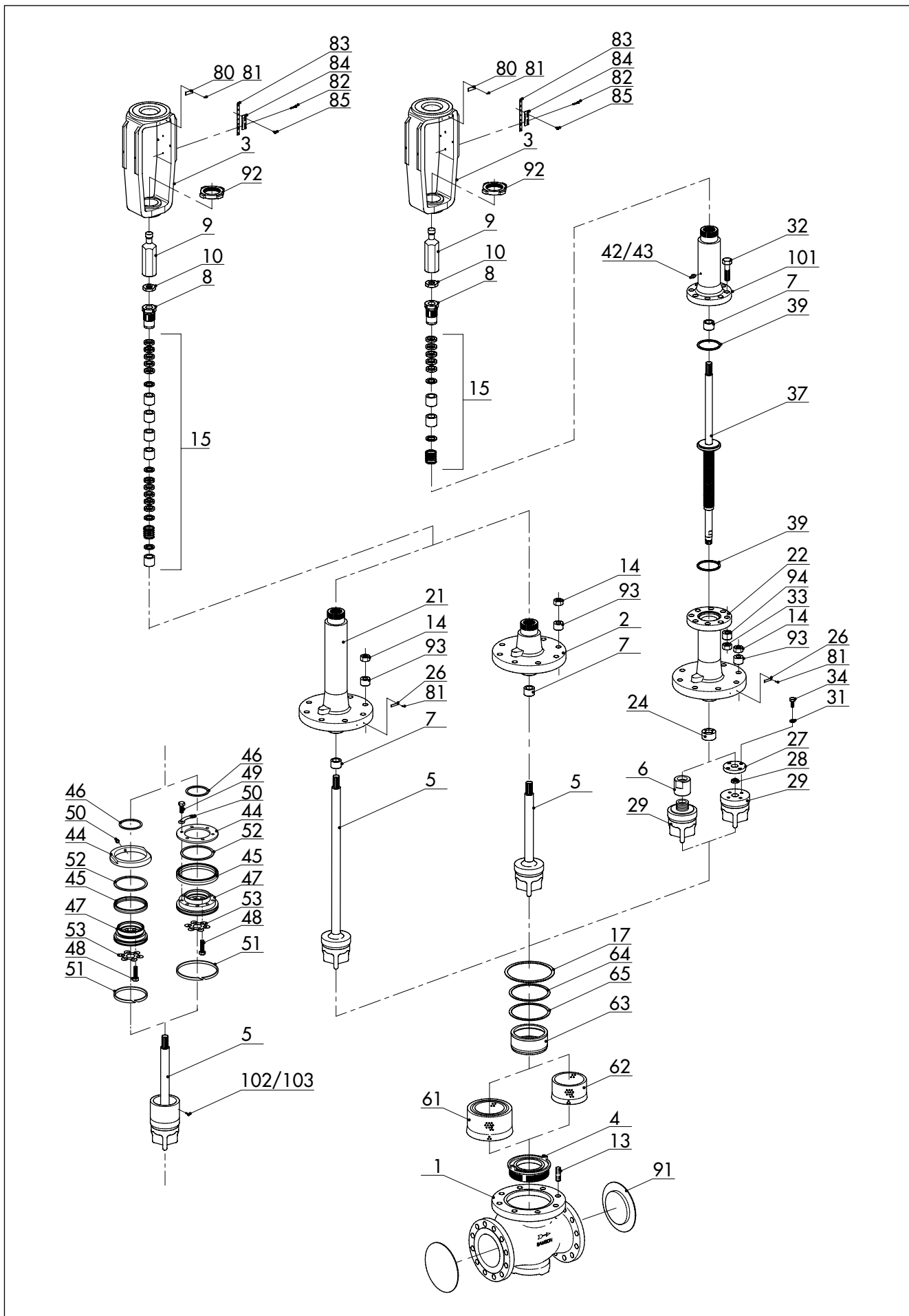
Print form

Clear form

Edition December 2017

Spare parts list

EL 8051 EN



Spare part no.		Qty.	Filled in by SAMSON: item number
1	Body		
2	Flange		
3	Yoke		
4	Seat		
5	Plug (with plug stem)		
6	Bellows nut		
7	Guide bushing		
8	Threaded bushing (packing nut)		
9	Stem connector nut		
10	Lock nut		
13	Stud bolt		
14	Body nut		
15	Packing		
17	Body gasket		
21	Insulating section		
22	Bellows seal		
24	Guide bushing		
26	Label (bellows seal or insulating section)		
27	Flange		
28	Clamping ring		
29	Plug for version with bellows seal		
30	Retaining washers		
31	Washer		
32	Bolt		
33	Nut		
34	Bolt		
37	Plug stem with metal bellows		
39	Gasket		
42	Screw plug		
43	Gasket		
44	Ring/ring nut ¹⁾		
45	Packing ring¹⁾		
46	Gasket¹⁾		
47	Support ¹⁾		

Spare part no.		Qty.	Filled in by SAMSON: item number
48	Hexagon screw ¹⁾		
49	Hexagon screw ¹⁾		
50	Lock ¹⁾		
51	Guide ¹⁾ (several guides only for version with graphite seal)		
52	Ring ¹⁾ (only for version with graphite seal)		
53	Snap ring ¹⁾		
61	Flow divider ST 2²⁾		
62	Flow divider ST 1 or ST 3²⁾		
63	Ring ²⁾		
64	Gasket²⁾		
65	Gasket²⁾		
80	Nameplate		
81	Grooved pin		
82	Screw		
83	Hanger		
84	Travel indicator scale		
85	Screw		
91	Protective caps		
92	Castellated nut		
93	Expansion sleeve		
94	Expansion sleeve ³⁾		
101	Bellows bonnet		
102	Snap ring ¹⁾ (only for version with bellows seal)		
103	Screw ¹⁾		

¹⁾ Version with balanced valve plug

²⁾ Version with flow divider

³⁾ For DN 15 to 150 only

Specifications subject to change without notice



SAMSON AG · MESS- UND REGELTECHNIK
Weismüllerstraße 3 · 60314 Frankfurt am Main, Germany
Phone: +49 69 4009-0 · Fax: +49 69 4009-1507
samson@samson.de · www.samson.de

EL 8051 EN

2017-12-15 · English