

# Spare parts list for Type 3271 (1000 cm<sup>2</sup>)

## Your contact details:

Title:

Name:

Company:

Customer no.

Street:

ZIP/postal code, city:

Country:

E-mail:

Phone:

## Ordering spare parts

The spare parts for Type 3271 (1000 cm<sup>2</sup>) are listed on the next pages. This document can also be used for ordering:

1. Fill in your contact data and information on the product.
2. Enter the quantity of spare parts needed.
3. Click [Send form] button to attach the PDF form to an e-mail.
4. Attach additional information (e.g. invoice, photos) to the e-mail, if necessary.
5. Send e-mail to [spareparts@samson.de](mailto:spareparts@samson.de).

Either

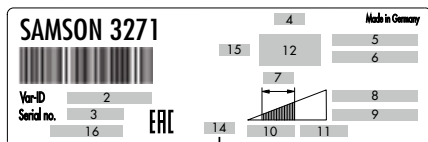
Configuration ID (Var-ID):

or

SAMSON order no.:

Position in order:

or



Type designation:

3 Serial number

4 Actuator area

5 and 6 Bench range in bar and psi

7 Operating travel in mm

8 and 9 Operating range in bar and psi

10 and 11 Permissible supply pressure  $p_{max}$  in bar or psi

12 Fail-safe action

14 Connecting thread

15 Diaphragm material

16 Date of manufacture

Operating medium

Send form

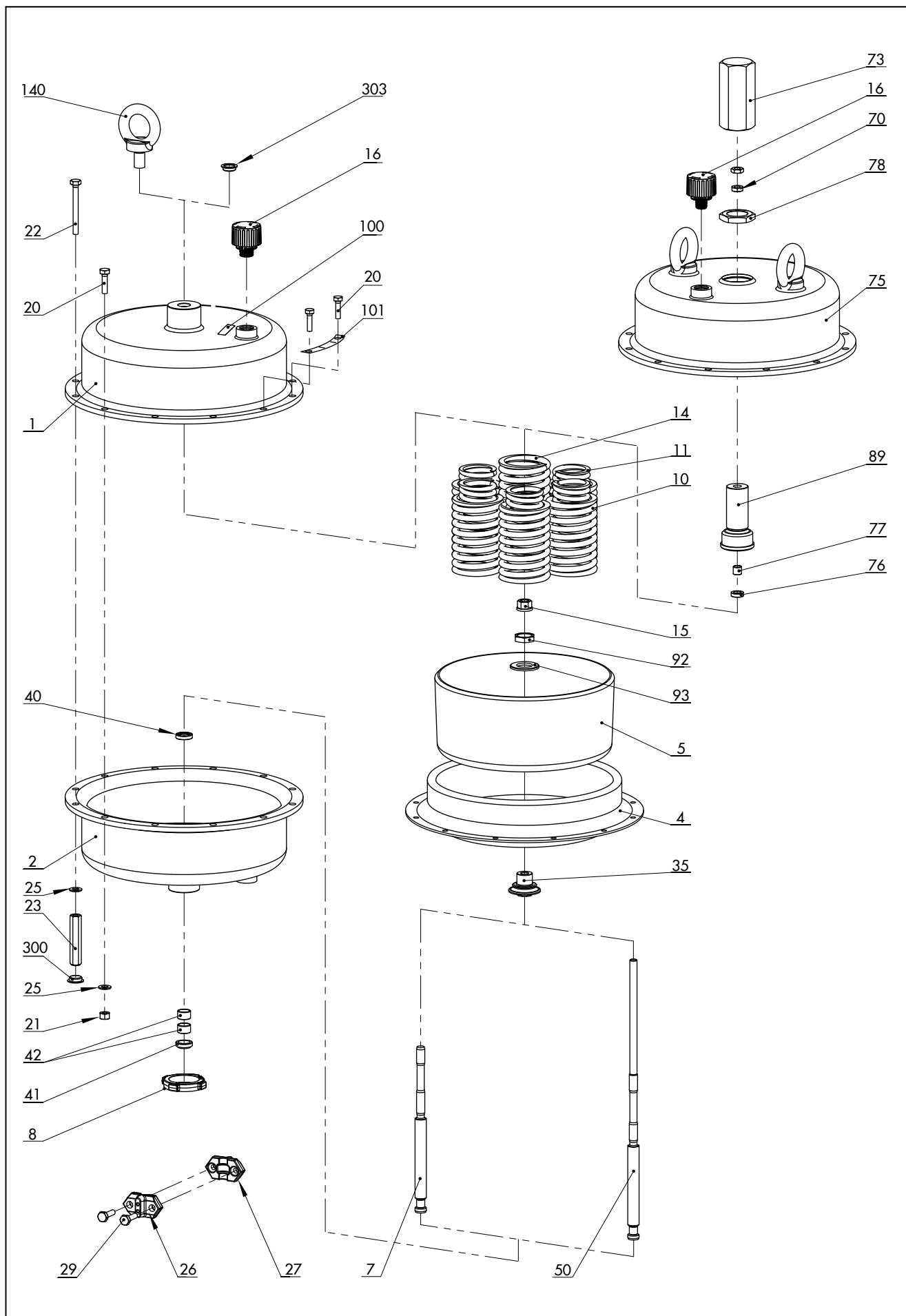
Print form

Clear form

Edition January 2018

Spare parts list

EL 8310-2 EN



<b>Spare part no.</b>		Qty.	Filled in by SAMSON: item number
1	Top diaphragm case		
2	Bottom diaphragm case		
<b>4</b>	<b>Diaphragm</b>		
5	Diaphragm plate		
7	Actuator stem		
8	Ring nut		
10	Spring (external)		
11	Spring (internal)		
14	Spring (centrally arranged)		
<b>15</b>	<b>Collar nut</b>		
<b>16</b>	<b>Vent plug</b>		
20	Hexagon bolt		
21	Hexagon nut		
22	Hexagon bolt (preloading)		
23	Hexagon nut (preloading)		
25	Washer		
26	Stem connector clamp		
27	Stem connector clamp		
29	Hexagon bolt		
<b>35</b>	<b>Compressor</b>		
<b>40</b>	<b>Radial shaft seal</b>		
<b>41</b>	<b>Wiper ring</b>		
<b>42</b>	<b>Dry bearing</b>		
50	Actuator stem		
70	Hexagon nut (lock nut)		
73	Cover		
75	Top diaphragm case		
<b>76</b>	<b>Radial shaft seal</b>		
<b>77</b>	<b>Dry bearing</b>		
78	Lock nut		
89	Bushing		
92	Hexagon nut		
93	Washer		

<b>Spare part no.</b>		Qty.	Filled in by SAMSON: item number
100	Nameplate		
101	Label (preloading)		
140	Lifting eyelet		
300	Blanking plug		
303	Screw plug		

Specifications subject to change without notice



SAMSON AG · MESS- UND REGELTECHNIK  
Weismüllerstraße 3 · 60314 Frankfurt am Main, Germany  
Phone: +49 69 4009-0 · Fax: +49 69 4009-1507  
samson@samson.de · www.samson.de

**EL 8310-2 EN**

2018-02-05 · English