

Spare parts list for Type 3271/3277 (240, 350, 700 cm²)

Your contact details:

Title:

Name:

Company:

Customer no.

Street:

ZIP/postal
code, city:

Country:

E-mail:

Phone:

Ordering spare parts

The spare parts for Type 3271/3277 (240, 350, 700 cm²) are listed on the next pages. This document can also be used for ordering:

1. Fill in your contact data and information on the product.
2. Enter the quantity of spare parts needed.
3. Click [Send form] button to attach the PDF form to an e-mail.
4. Attach additional information (e.g. invoice, photos) to the e-mail, if necessary.
5. Send e-mail to spareparts@samson.de.

Either

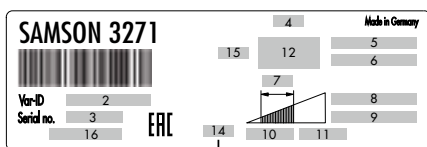
Configuration ID (Var-ID):

or

SAMSON order no.:

Position in order:

or



Type designation:

- 3 Serial number
- 4 Actuator area
- 5 and 6 Bench range in bar and psi
- 7 Operating travel in mm
- 8 and 9 Operating range in bar and psi
- 10 and 11 Permissible supply pressure p_{max} in bar or psi
- 12 Fail-safe action
- 14 Connecting thread
- 15 Diaphragm material
- 16 Date of manufacture
- Operating medium

Send form

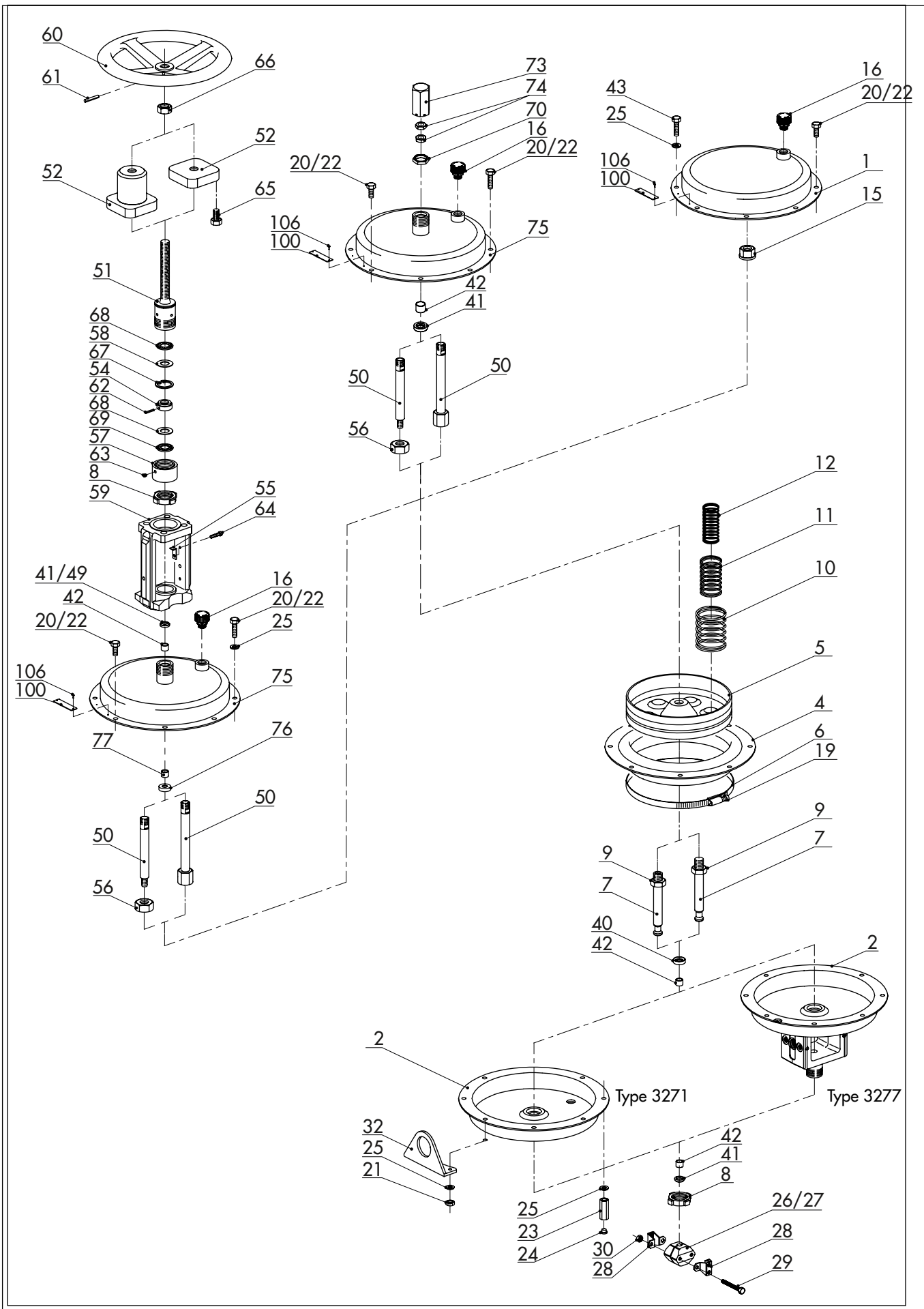
Print form

Clear form

Edition February 2018

Spare parts list

EL 8310-6 EN



Spare part no.		Qty.	Filled in by SAMSON: item number
1	Top diaphragm case		
2	Bottom diaphragm case		
4	Diaphragm		
5	Diaphragm plate		
6	Hose clamp		
7	Actuator stem		
8	Ring nut		
9	Hexagon nut		
10	Spring (external)		
11	Spring (internal)		
12	Spring (internal)		
15	Collar nut		
16	Vent plug		
19	Compressor on the hose clamp (6)		
20	Hexagon bolt		
21	Hexagon nut		
22	Hexagon bolt (preloading)		
23	Hexagon nut (preloading)		
24	Blanking plug		
25	Washer		
26	Stem connector clamp		
27	Stem connector clamp		
28	Clamp with bracket		
29	Hexagon bolt		
30	Hexagon nut		
32	Hanger		
40	Radial shaft seal		
41	Wiper ring		
42	Dry bearing		
43	Hexagon screw for hanger (32)		
49	Wiper ring ¹⁾		
50	Actuator stem		
51	Stem connector		
52	Screwed flange		
54	Ring		

Spare part no.		Qty.	Filled in by SAMSON: item number
55	Pointer		
56	Hexagon nut ²⁾		
57	Coupling nut		
58	Washer		
59	Yoke		
60	Handwheel		
61	Dowel pin		
62	Dowel pin		
63	Threaded pin		
64	Cap screw		
65	Hexagon screw		
66	Lock nut		
67	Snap ring		
68	Axial needle seal		
69	Washer		
70	Hexagon nut (lock nut)		
73	Cover		
74	Hexagon nut		
75	Top diaphragm case		
76	Radial shaft seal		
77	Dry bearing		
100	Nameplate		
101	Label (preloading)		
106	Grooved pin		

¹⁾ Only for version with 240 cm² actuator area

²⁾ Replaces collar nut (15) in version with travel stop or handwheel

Specifications subject to change without notice



SAMSON AG · MESS- UND REGELTECHNIK
Weismüllerstraße 3 · 60314 Frankfurt am Main, Germany
Phone: +49 69 4009-0 · Fax: +49 69 4009-1507
samson@samson.de · www.samson.de

EL 8310-6 EN

2018-02-05 · English