

# Automation System TROVIS 5400

## Meter Bus Gateway TROVIS 5488



### Application

Used in HVAC networks to integrate M-Bus meters and pulse counters into a control system



The meter bus plug-in module enables simple connection of heat or energy meters as well as water meters to the meter bus gateway. A maximum of 32 meters conforming to EN 1434-3 may be connected for data transfer. Additionally, the meter bus gateway is equipped with 16 inputs for pulse counting, e.g. from heat or water meters.

The meter bus gateway converts the read or recorded data into Modbus data. This allows the meters to be integrated into a control system. Modern control systems, e.g. the TROVIS building control system from SAMSON, visualize and log the meter data, e.g. for billing purposes.

### Versions

TROVIS 5488 Meter Bus Gateway

See Table 1: Technical data for specifications.

### Ordering text

TROVIS 5488 Meter Bus Gateway

### Accessories:

RS-232/RS-485 four-wire cable converter, 1.5 m	1400-7308
Memory module	1400-9379
RS-232 communication cable (software update)	1400-7419
Modem cable	1400-7139



Fig. 1: TROVIS 5488 Meter Bus Gateway

**Table 1: Technical data**

Inputs	16 inputs for floating contacts (e.g. pulse counters), each with 32 bit count register Counting only possible with mains voltage!
	Max. 32 M-Bus meters
Interfaces	
Meter bus	M-Bus according to EN 1434-3 or adapted
System bus	RS-232 Modbus interface for modem or point-to-point connection to a PC (Modbus: Hardware according to Table 2 Software according to GOULD MODICON, see Table 2 RTU protocol, data format 8-N-1, RJ-12 connector socket at the back)
Supply	230 V AC (+10 %, -15 %), 48 to 62 Hz, approx. 9 VA power consumption
Temperature range	0 to 40 °C (operation), -20 °C to 60 °C (storage and transport)
Degree of protection	IP 40 according to IEC 60529
Class of protection	II according to VDE 0106
Degree of contamination	2 according to VDE 0110
Overvoltage category	II according to VDE 0110
Humidity rating	F according to VDE 40040
Noise emission	According to EN 61000-6-3
Noise immunity	According to EN 61000-6-1
Weight	Approx. 0.6 kg

**Communication**

- RS-232 interface for modem or point-to-point connection to a PC
- Exchange of configuration data and parameters using memory module
- Modbus connection possible
- Alarm notification by text message or fax (modem required)
- Firmware update using RS-232 system bus interface (point-to-point connection with a PC) possible
- RS-232/RS-485 cable converter for communication with the bus (optional)

**Operation**

All five operating elements are located in the front panel of the device. The front panel is protected by a Plexiglas door.

Icon	Key	Description
	Changeover key	Change from operating level to configuration and parameter level
	Reset key	Reset all freely accessible function blocks and parameters to their default values
	Arrow keys	Navigate through all levels, adjust function blocks and parameters
	Enter key	Open levels, confirm and save settings

The device has a display level and a configuration level.

**Display**

The INF levels provide information about the status of the device.

INF level	Sublevel	Description
8	FSR1/2	Error status register 1 and 2*
	Bruch	Sensor failure information*
	END	Return to operating level
9	Parameter	Modbus information
	END	Return to operating level
10	WMZ ii	Display all active meters and data points: flow rate, total capacity, capacity, energy, flow temperature, return flow temperature, identification number, meter address
	END	Return to operating level

\* Currently not used

**Configuration**

Functions and parameters are available in the following sub-levels:

Group	Description
CO9	Functions for Modbus communication
PA5	System date and time
PA9	Parameters for Modbus communication
PA10	Parameters for meter bus communication (M-Bus)

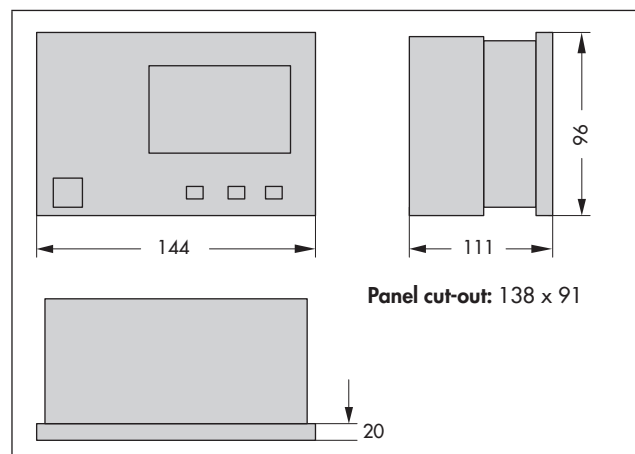
**Electrical connection and installation**

The controller consists of a housing and back panel. The electronics are integrated into the housing. The back panel contains the terminal block. Two wires of 0.75 mm<sup>2</sup> may be connected to each terminal. For wall mounting, fasten the back panel with the terminal block to the wall. After installing the connecting lines, attach the housing.

For panel mounting, insert the housing into the prepared panel cut-out and secure it. After installing the connecting lines, attach the housing.

The back panel also provides small hooks for top-hat rail mounting.

**Dimensions in mm**



**Table 2: Modbus**

Modbus protocol description	
Specification	GOULD MODICON
Protocol name	Modbus
Protocol type	584
Protocol format	RTU (remote terminal unit)
Protocol principle	Master/slave
Max. word length	2 bytes
Max. block length	256 bytes
Block start identification	None
Block end identification	Min. 3 bytes transmission pause
Data integrity check	CRC-16
Ranges	
Address range	0 to 255
Standard addresses	1 to 247
Special addresses	0 and 248 to 255
Register range	0001 to 9999
Supported function codes for TROVIS 540x and 6400	1, 3, 5, 6, 15, 16
Supported function codes for TROVIS 5100, 547x, 5488, 5500	1, 3, 5, 6
Special function codes	65, 66, 67, 68, 69
Data transmission	
Standard format	1 start bit, 8 data bits, 1 stop bit, no parity (8-N-1)
Transfer rates	150 to 19200 baud (standard: 9600 baud)
Transmission standard	RS-485, RS-422, four-wire bus
Driver load	> 54 Ω
RS-485 line termination	200 Ω between receiver lines
Transmission medium	Screened twisted pair (STP, AWG 24) Resistance < 100 Ω/km, Capacitance < 100 nF/km
Topology	
Bus topology	Line, with stubs separated by repeaters
Number of bus devices	Max. 32 per segment (including repeaters or converters)
Number of repeaters	Max. 5 in series
Stub length (branch)	Max. 3 m
Segment length	Max. 1200 m
Bus range	Maxi. 7200 m, greater distances on request

**Lightning and overvoltage protection**

Upon installation, observe the relevant standards and regulations governing lightning and overvoltage protection. For data transmission lines running between buildings, lightning and overvoltage protection must be ensured by the appropriate measures. In addition, sufficient equipotential bonding must be guaranteed.

- Surge arrester SA 1000, Surge arrester SA 2000 or Blitzductor® CT Type BCT MLC BE C 5 or equivalent product
- M-Bus: Blitzductor® CT Type BCT MLC BD48 by Dehn or equivalent product
- 230 V network: DEHNguard® T Type DGT 275 by Dehn or equivalent product

TV-SK 6364 contains additional information.

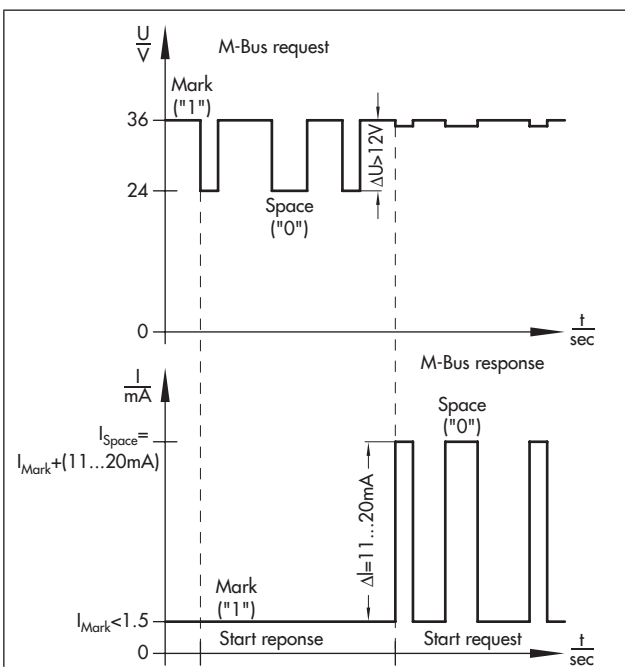
**Installing bus line and shielding**

Make sure the bus lines are installed correctly to avoid any possible disturbances.

- Properly shield the bus cable (shielding must be used on both sides and cover a large area)
- Connect the bus devices over the shortest distance
- Reduce different potentials by using sufficient equipotential bonding, otherwise transient currents can be conducted over the shielding!

**Table 3: TROVIS 5488 Meter Bus Gateway**

Specification	M-Bus according to EN 1434-3 M-Bus user group, V 4.8 dated 1997-11-11
Meter bus topology	Two-wire bus system with free topology Bus, star, ring or tree (recommended: star) Total segment length ≤ 1000 m Max. distance (stub) between meter bus gateway and meter ≤ 350 m
Transmission medium	Screened twisted pair Line resistance ≤ 50 Ω per segment Total line capacitance ≤ 220 nF (Σ of all segments) For larger distances, greater line resistance or capacitance, install a repeater at the appropriate location
Connection	Reverse polarity and short-circuit protection Max. available load: 48 ZB (ZB = meter bus load; 1 ZB is the equivalent to the standard power consumption of a bus-capable meter = 1.5 mA)
Transfer rates	300 to 2400 baud
Access See Fig. 2	The connected meters can be read either cyclically, every 24 hours or by request from the building control system. According to EN 1434-3, the following data points are transmitted: – Heat (energy) – Total capacity – Heat capacity – Flow rate – Primary flow and primary return flow temperatures  Apart from the error status alarms and identification number, billing date or charge rate data are transmitted depending on the device type.  The document TV-SK 6311 lists heat, electricity and water meters that have been tested so far.



Request from master:  
change from 36 V (H = "1") to 24 V (L = "0")

Response of addressed slave: bit-wise switching of no-load current  
from 1.5 mA (H = "1") to approx.  $I_{\text{Mark}} (1.5 \text{ mA}) + 11$  to 20 mA  
(L = "0")

Fig. 2: MASTER SLAVE, voltage/current pulse diagram

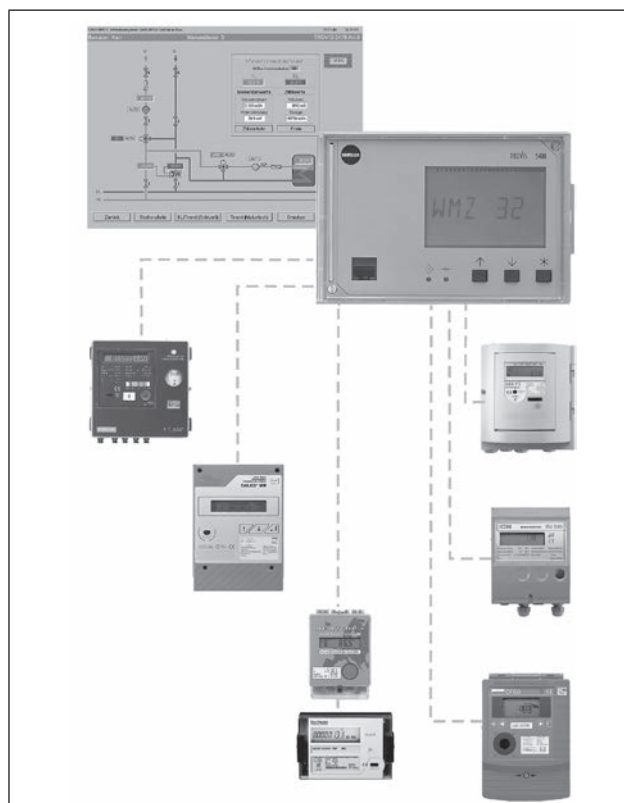
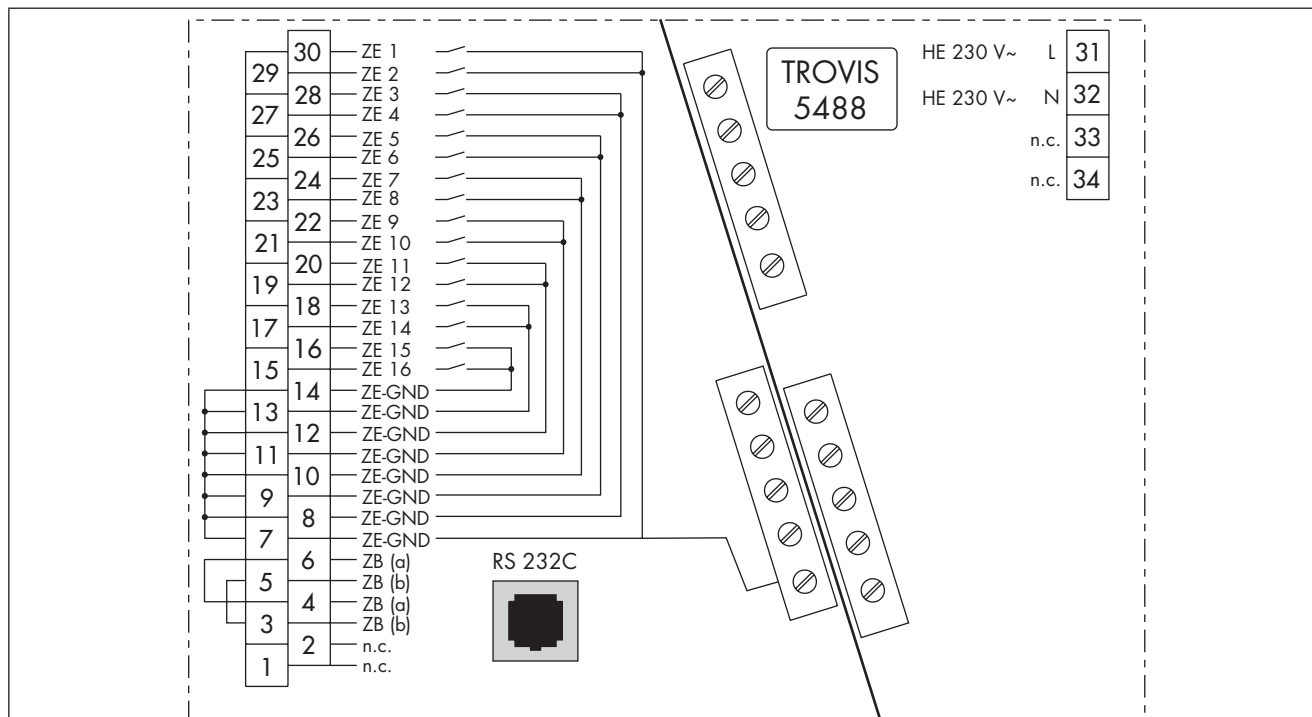


Fig. 3: Meter bus gateway with water meters

### Terminal assignment



- ZB (a) Meter bus connection (terminal 6 = terminal 4,
- ZB (b) terminal 5 = terminal 3), electrically isolated against ZE
- ZE 1...16 Counter inputs for pulse counters
- ZE\_GND Ground for counter inputs
- n. c. Unassigned
- RS-232-C Serial interface for connection to higher-level control system (Modbus protocol)

Specifications subject to change without notice.



SAMSON AG · MESS- UND REGELTECHNIK  
Weismüllerstraße 3 · 60314 Frankfurt am Main · Germany  
Phone: +49 69 4009-0 · Fax: +49 69 4009-1507  
Internet: <http://www.samson.de>

T 5488 EN

2012-03-16