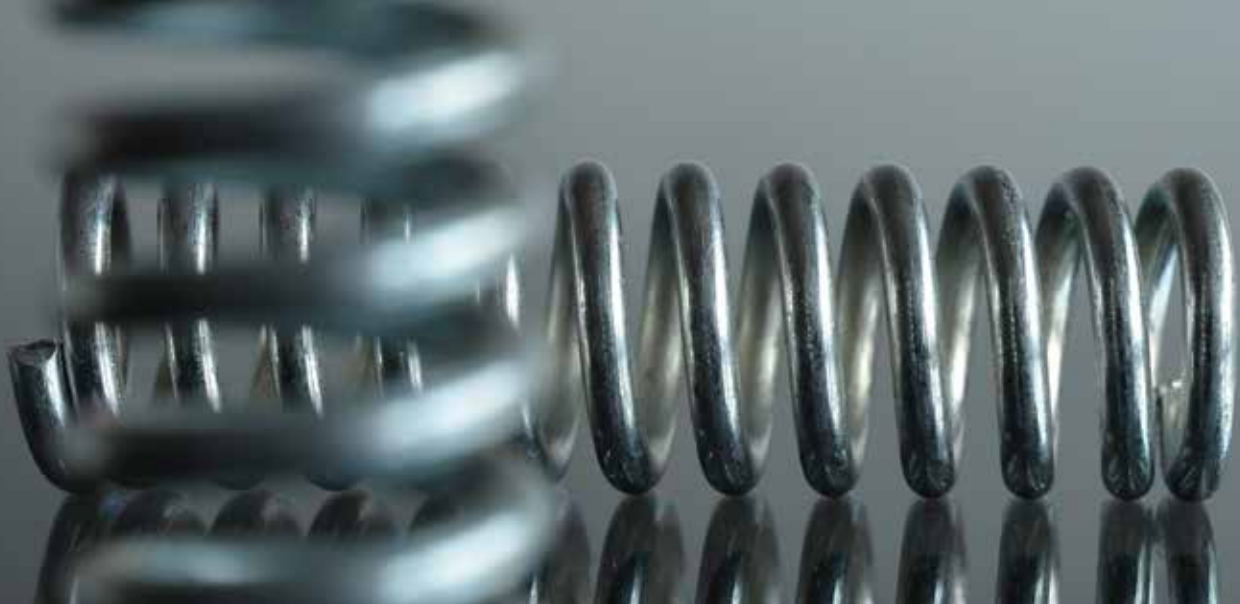




SAMSON

**SAMSON**



## Self-operated Pressure Regulators

Type 41-23 Pressure Reducing Valve  
and Type 41-73 Excess Pressure Valve



# Type 41-23 Pressure Reducing Valve

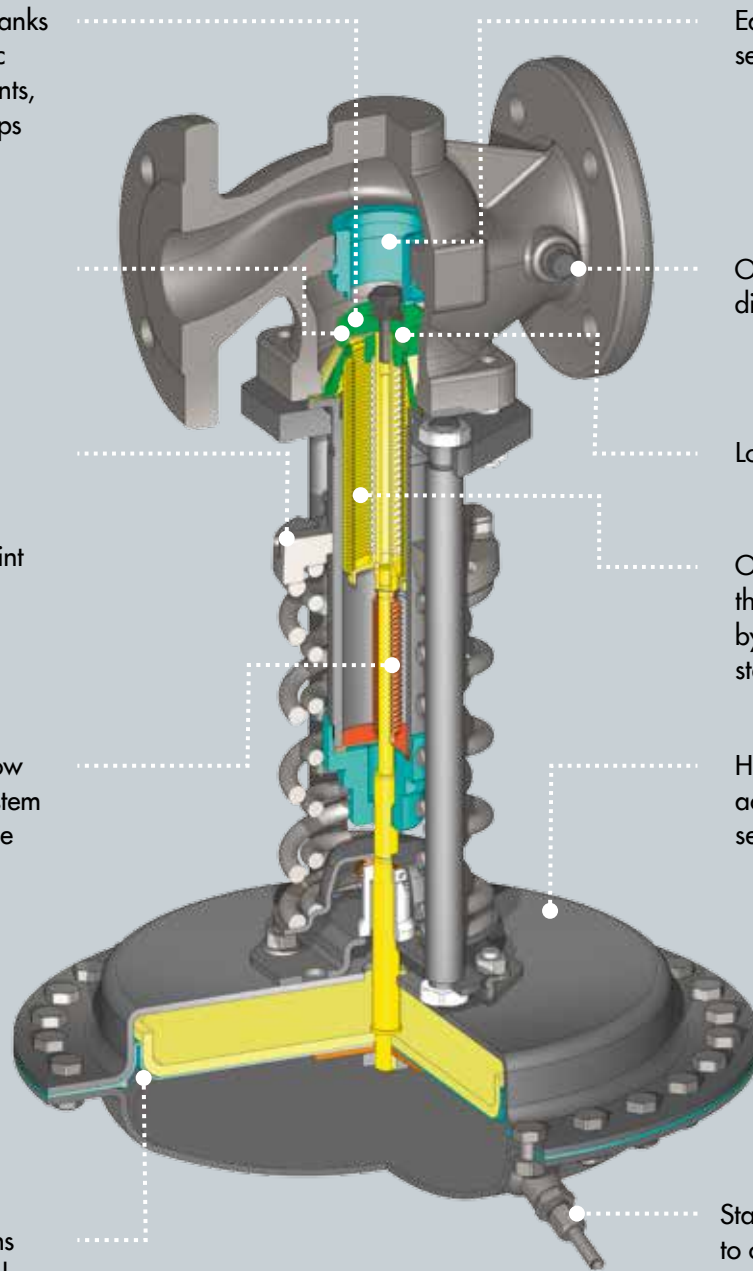
Good control behavior thanks to optimized characteristic and reduced  $K_{VS}$  coefficients, e.g. for high pressure drops

Min. two reduced  $K_{VS}/C_V$  coefficients per valve size

Simple adjustment of the pressure to be regulated by changing the spring compression at the set point adjuster

High leak tightness and low hysteresis thanks to plug stem seal with maintenance-free stainless steel bellows

Wide range of applications thanks to diaphragms made of EPDM, FPM, NBR or EPDM with PTFE coating



Easily replaceable threaded seats

Optional pressure tapping directly at the valve body

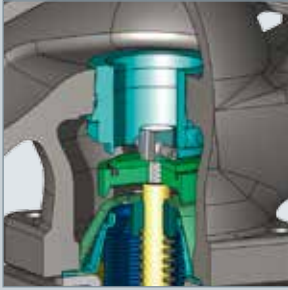
Low-noise seat-plug trim

Optimal control response thanks to pressure balancing by maintenance-free stainless steel bellows

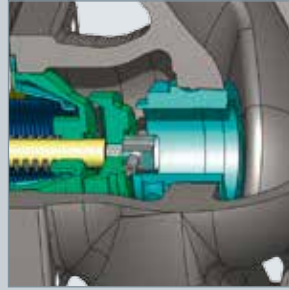
High control quality thanks to actuator sizes tailored to the set point range

Stable control response thanks to optional screw joint with restriction

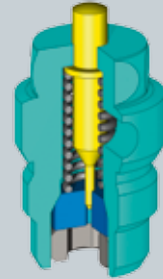
# Modular design allows for many options



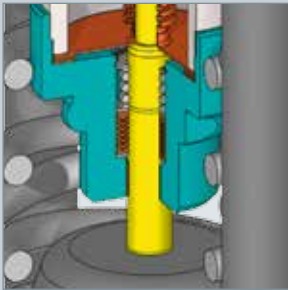
Soft seals made of EPDM, FPM or NBR for leakage class VI



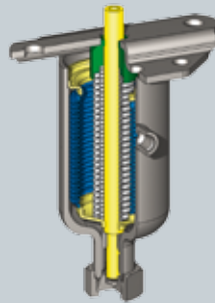
Special plug stem guiding for use in vertical pipelines



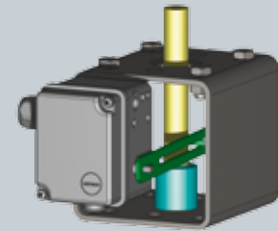
Micro trims to regulate even the smallest flow rates



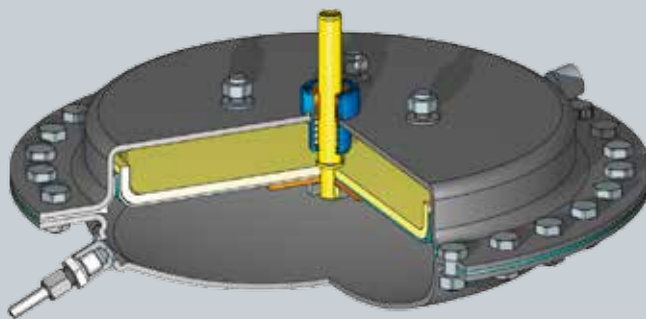
Backup packing for critical media



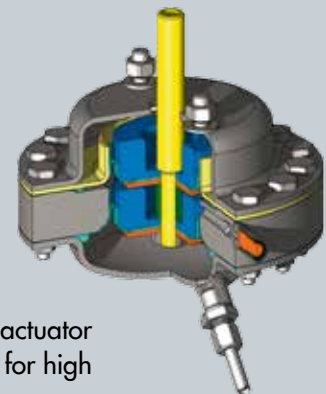
Metal bellows actuator for set points up to 28 bar, high temperatures and corrosive media



Position transmitter or limit switch for plant monitoring

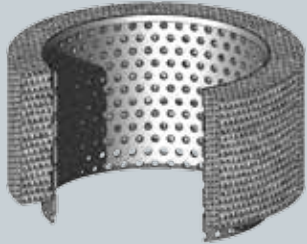


Actuator with leakage line connection for critical media



Double diaphragm actuator with safety function for high plant availability

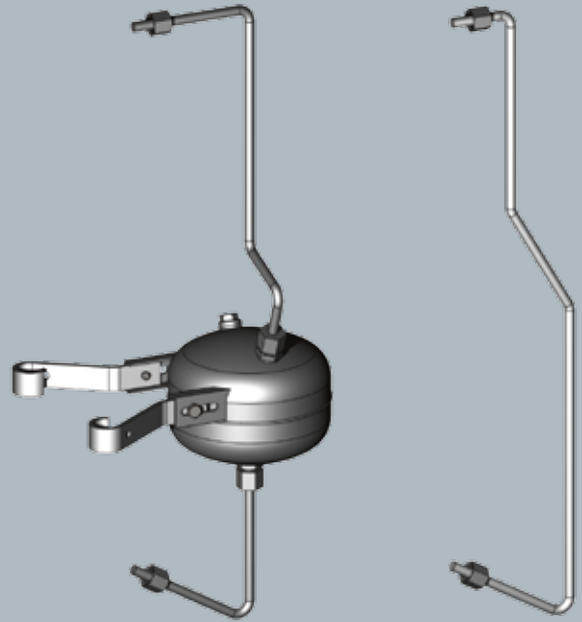
# Accessories



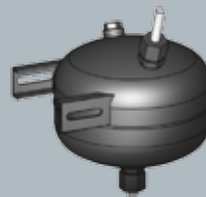
Flow dividers to reduce the noise emissions when regulating gases and vapors



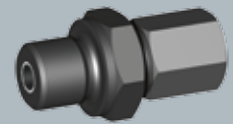
Protective sleeves, e.g. against dust, erosion during sandstorms or against corrosion in offshore service



Quick mounting thanks to control line kits for pressure tapping at the valve body

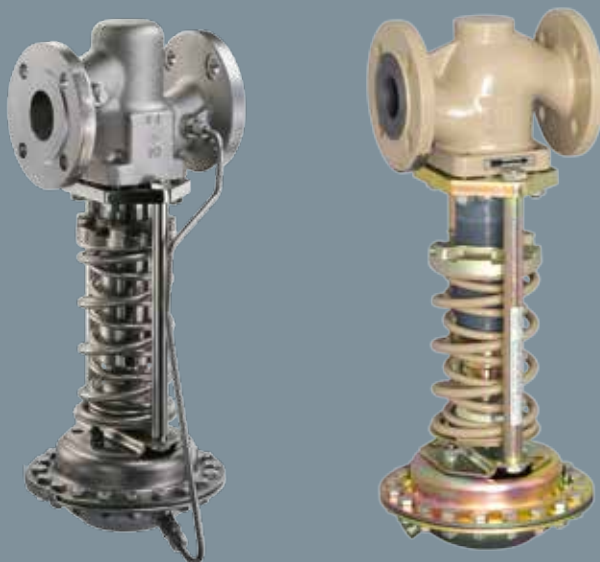


Intermediate tank for steam and medium temperatures exceeding 150 °C



Screw joint with restriction for connection to the actuator's control line

# Universal application



## Type 41-23 Pressure Reducing Valve and Type 41-73 Excess Pressure Valve

The Type 41-23 and Type 41-73 Pressure Regulators are suitable for liquids, gases, and vapors. They do not need any auxiliary energy as the energy required to regulate is taken from the process medium.

Type	41-23 Pressure Reducing Valve	41-73 Excess Pressure Valve
Versions	DIN/ANSI/JIS	
Set points	0.05 to 28 bar	
Nominal size	DN 15 to 100	
Perm. temperature range	-30 to 350 °C	
Max. perm. differential pressure	25 bar	
$K_{vs}$	0.001 to 125	0.1 to 125
$C_v$	0.0012 to 145	0.12 to 145
Body	Cast iron, spheroidal graphite iron, cast steel, stainless steel	
Diaphragm	EPDM, FPM, NBR, EPDM with PTFE coating	
Plug seal	Metal, EPDM, FPM, NBR, PTFE	

SAMSON

**SAMSON**

## Self-operated Pressure Regulators



SAMSON AKTIENGESELLSCHAFT  
Weismüllerstraße 3 · 60314 Frankfurt am Main, Germany  
Phone: +49 69 4009-0 · Fax: +49 69 4009-1507  
E-mail: [samson@samson.de](mailto:samson@samson.de) · Internet: [www.samson.de](http://www.samson.de)