



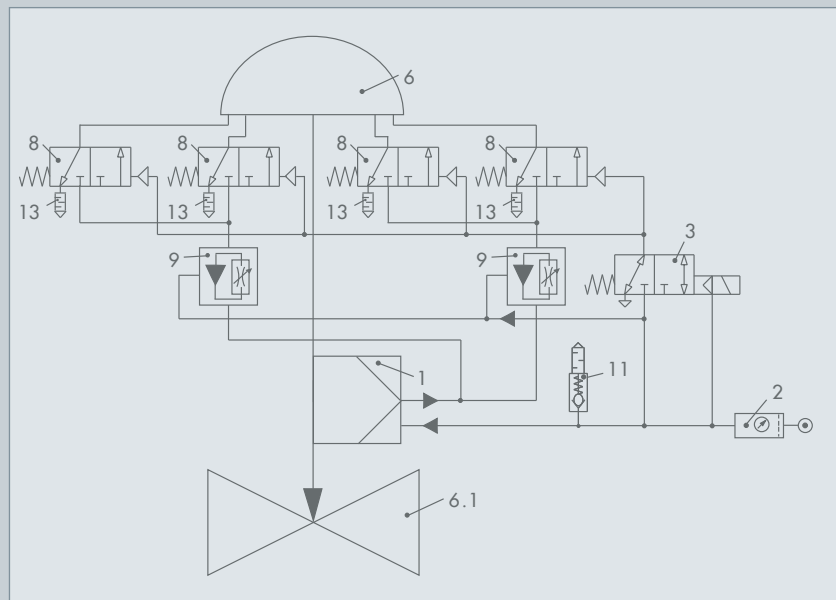
## Fast Positioning Performance

- Implementation of challenging positioning times, e.g. under two seconds for rated travels up to 120 mm
- Effective diaphragm areas from 350 to 2800 cm<sup>2</sup>
- Precise control of small signal changes
- Automatic initialization and optimization of control parameters
- EXPERTplus valve diagnostics integrated into the positioner



**Applications**

- Anti-surge control (compressor bypass)
- Parex™/Olex™ adsorption processes

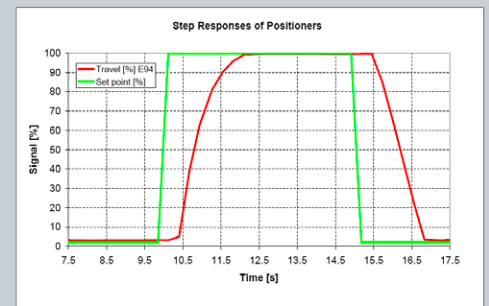


**Sample hook-up**

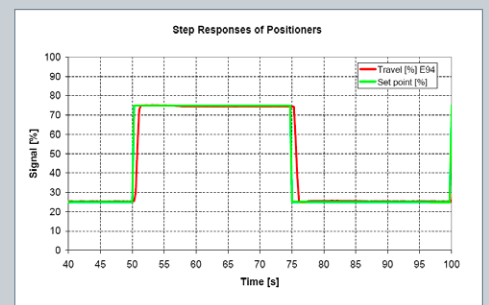
- 1 Positioner
- 2 Supply air station
- 3 Solenoid valve
- 6 Actuator
- 6.1 Valve
- 8 Booster valve
- 9 Booster
- 11 Excess pressure valve
- 13 Vent silencer

**Sample responses**

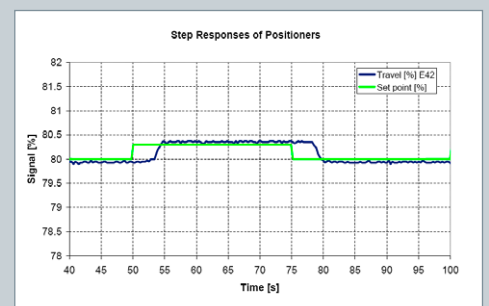
**100 % signal change\***



**50 % signal change\***



**0.3 % signal change\***



\* Related to bench range