



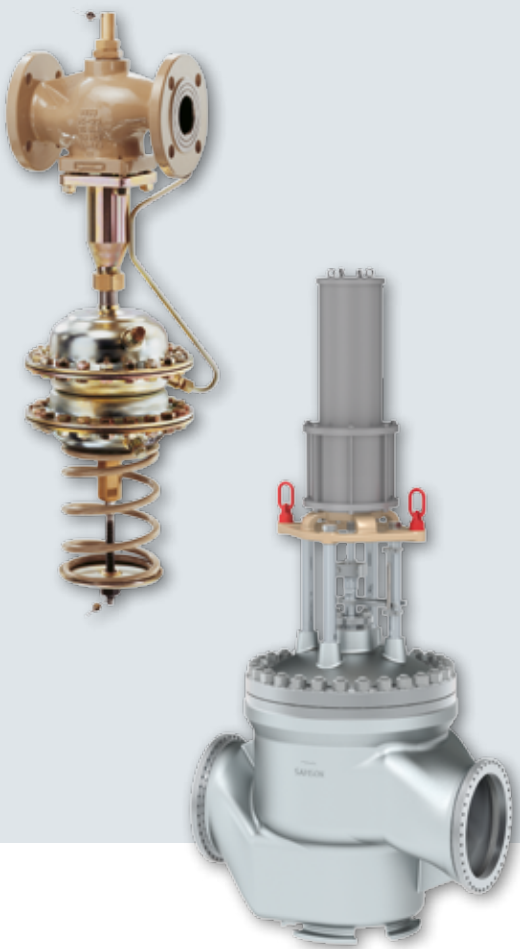
## **SOLUTIONS**

Intelligent Valve Engineering from a Single Source

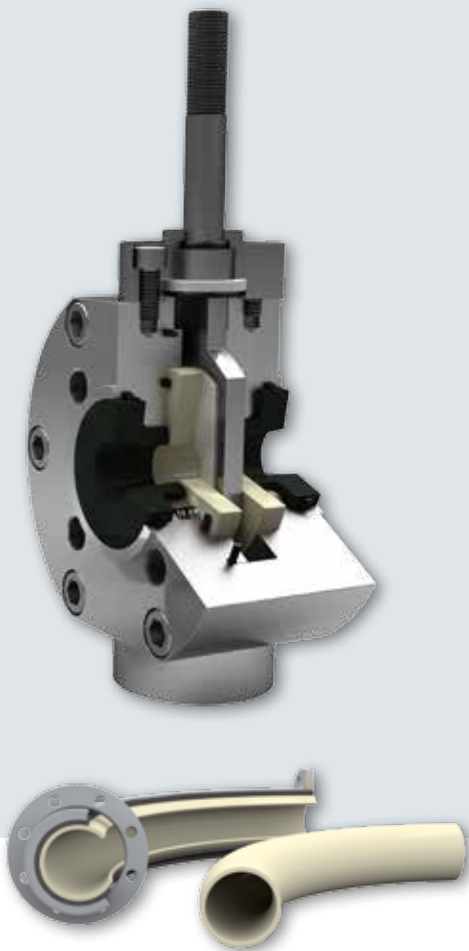
SMART IN FLOW CONTROL.

**SAMSON** – For over one hundred years, SAMSON has developed and manufactured control equipment for industrial processes. From rugged self-operated regulators to highly specialized control valves for industrial processes, SAMSON manufactures valves in all common sizes, in standard materials and exotic alloys, equipped with different actuators, tailor made for the specific demands of each application.

**SAMSON AIR TORQUE** – Manufacturing pneumatic rotary actuators for any kind of rotary control valve, AIR TORQUE has become the world leader in this special field. Technical features of the actuators include external adjustment of the end positions and their involute gearing, which continuously converts the travel movement into a rotary motion without any friction.



**SAMSON CERA SYSTEM** – High-performance ceramic materials provide solutions wherever standard valves reach their limits in resistance to wear, corrosion and high temperatures. CERA SYSTEM specializes in ball and sliding disk valves as well as pipe components with ceramic linings. Industry-specific applications catered for include coal gasification and photovoltaics.



**SAMSON LEUSCH** – The specialized manufacturer focuses on valves for pipe diameters up to three meters. LEUSCH's control and shut-off butterfly valves, ball valves and segmented ball valves are equipped with soft or metal seals, are suitable for both extremely low and extremely high temperatures from  $-196$  to  $+1000$  °C and can handle high pressure ratings up to PN 420 or Class 2500.

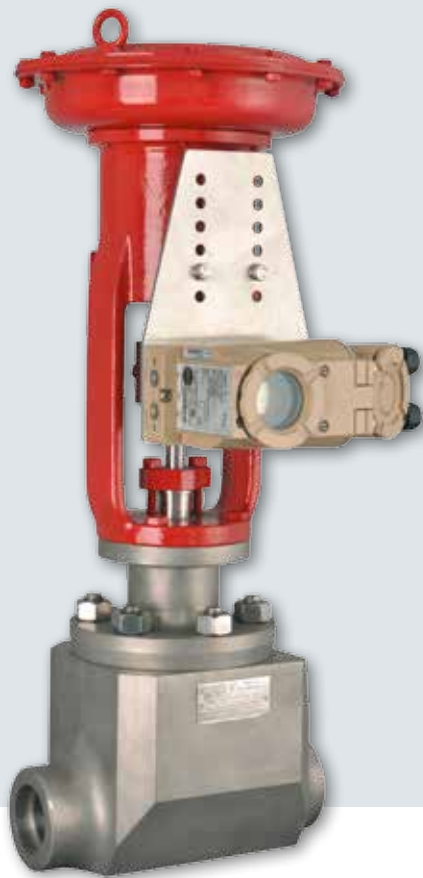


**SAMSON PFEIFFER** – The high-quality, homogeneous polymer linings, such as PTFE and PFA, are used in control, butterfly and ball valves to provide solutions for numerous applications. A wide product range of ball and butterfly valves made of metal alloys, turnkey pigging systems, pigging components and sampling valve technology round off the product portfolio.

**SAMSON Prozessautomation** – The company builds turnkey systems and offers services, such as consultation, planning, manufacturing, commissioning and final validation. Over 50 years of expertise and experience make it the specialist for system solutions within the SAMSON group. Furthermore, the product range includes solenoid valves and limit switches to control and monitor actuators operating in hazardous areas and safety circuits.



**SAMSON RINGO VÁLVULAS** – The valve specialist is renowned for valves in large nominal sizes and high pressure ratings for power stations as well as the oil and gas sector. Its product range includes ball valves, control valves, gate, globe and check valves, choke valves and axial flow valves as well as special valves, such as subsea valves or double block-and-bleed valves.



**SAMSON SED** – SED specializes in the development, manufacture and distribution of diaphragm valves, seat valves and variable area flow meters. In addition, SED offers a wide range of mechanical and electric accessories for monitoring and control that is perfectly tailored to the valves. Valve bodies and actuator components are made of high-quality metals and plastic materials.



**SAMSON STARLINE** – Forged steel ball valves in sizes NPS ¼ to 12 and ANSI Class 150 to 2500 as well as in API 6A pressure ratings are mainly used in special applications, such as upstream, cryogenic and high-temperature service. Thanks to superior quality, STARLINE is a top supplier to all major oil and gas companies as well as EPC contractors.



**SAMSON VETEC** – The Maxifluss control valves by VETEC bring together the strengths of control valves, butterfly valves and ball valves. Their universal design makes them suitable for use in both standard and critical applications. Thanks to the eccentric rotary plug, the plug touches the seat only when the valve is fully closed. This ensures exact control and a high rangeability.





SAMSON brings together highly specialized companies that develop and manufacture control equipment to meet all requirements, from forged ball valves to bypass valves installed in steam turbines. SAMSON is a one-stop shop for the full range of high-quality and state-of-the-art control equipment used in industrial processes.

SAMSON offers engineered solutions from a single source, for example valves fitted with accessories.

Control valves automated with SAMSON positioners communicate using all common protocols and bus systems and can be integrated seamlessly into all common process control systems.

The benefits speak for themselves:

**SAMSON as a main valve vendor provides customers with the whole range of valve engineering products and services from one single source.**

# SAMSON AT A GLANCE

## STAFF

- Worldwide 4,000
- Europe 3,300
- Asia 500
- Americas 200
- Frankfurt am Main, Germany 1,600

## MARKETS

- Chemicals and petrochemicals
- Power and energy
- District heating and cooling, building automation
- General industry
- Industrial gases
- Food and beverages
- Metallurgy and mining
- Oil and gas
- Pharmaceuticals and biotechnology
- Marine equipment
- Water and wastewater
- Pulp and paper

## PRODUCTS

- Valves
- Self-operated regulators
- Actuators
- Valve accessories
- Signal converters
- Controllers and automation systems
- Sensors and thermostats
- Digital solutions

## SALES SITES

- More than 50 subsidiaries in over 40 countries
- More than 200 representatives

## PRODUCTION SITES

- SAMSON Germany, Frankfurt, established 1916  
Total plot and production area: 150,000 m<sup>2</sup>
- SAMSON France, Lyon, established 1962  
Total plot and production area: 23,400 m<sup>2</sup>
- SAMSON Turkey, Istanbul established 1984  
Total plot and production area: 11,053 m<sup>2</sup>
- SAMSON USA, Baytown, TX, established 1992  
Total plot and production area: 9,200 m<sup>2</sup>
- SAMSON China, Beijing, established 1998  
Total plot and production area: 10,138 m<sup>2</sup>
- SAMSON India, Pune district, established 1999  
Total plot and production area: 18,000 m<sup>2</sup>
- SAMSON Russia, Rostov-on-Don, established 2015  
Total plot and production area: 5,000 m<sup>2</sup>
- SAMSON AIR TORQUE, Bergamo, Italy  
Total plot and production area: 27,684 m<sup>2</sup>
- SAMSON CERA SYSTEM, Hermsdorf, Germany  
Total plot and production area: 14,700 m<sup>2</sup>
- SAMSON KT-ELEKTRONIK, Berlin, Germany  
Total plot and production area: 1,060 m<sup>2</sup>
- SAMSON LEUSCH, Neuss, Germany  
Total plot and production area: 18,400 m<sup>2</sup>
- SAMSON PFEIFFER, Kempen, Germany  
Total plot and production area: 35,400 m<sup>2</sup>
- SAMSON RINGO, Zaragoza, Spain  
Total plot and production area: 18,270 m<sup>2</sup>
- SAMSON SED, Bad Rappenau, Germany  
Total plot and production area: 10,370 m<sup>2</sup>
- SAMSON STARLINE, Bergamo, Italy  
Total plot and production area: 26,409 m<sup>2</sup>
- SAMSON VETEC, Speyer, Germany  
Total plot and production area: 27,090 m<sup>2</sup>



SAMSON AKTIENGESELLSCHAFT  
Weismuellerstrasse 3 · 60314 Frankfurt am Main, Germany  
Phone: +49 69 4009-0 · Fax: +49 69 4009-1507  
E-mail: samson@samson.de · Internet: www.samson.de